



Product catalogue

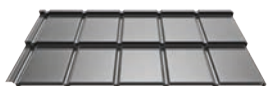
COMPACT SERIES

THE POWER OF ROOFS



MODULAR SERIES

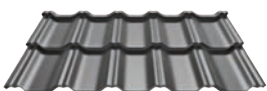
IZI^{ROOF}



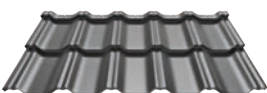
IZI^{LOOK}



ZET^{ROOF}

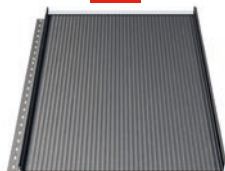


ZET^{LOOK}

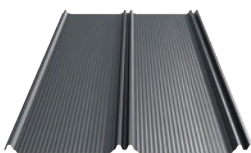


PANEL SERIES

FIT



ZIPP

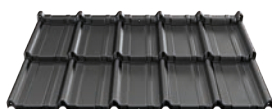


LAMBDA 2.0



COMPACT SERIES

FINN 2.0



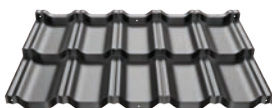
ALFA 2.0



HETA 2.0



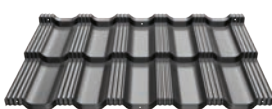
GAMMA 2.0



STIGMA 2.0



BAVARIA^{ROOF} 2.0



CLASSIC SERIES

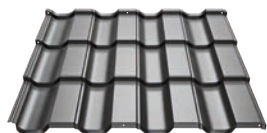
FINN



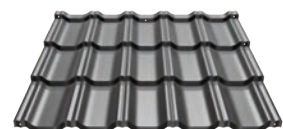
ALFA



HETA



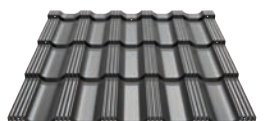
GAMMA



STIGMA

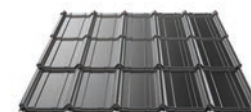


BAVARIA^{ROOF}

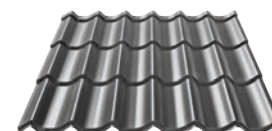


RETRO SERIES

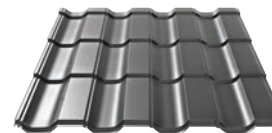
FINN^{RETRO}



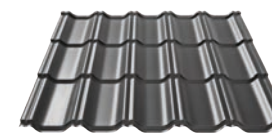
ALFA^{RETRO}



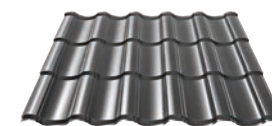
HETA^{RETRO}



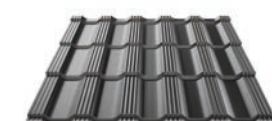
GAMMA^{RETRO}



STIGMA^{RETRO}

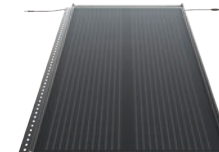


BAVARIA^{ROOF-RETRO}



SOLROOF

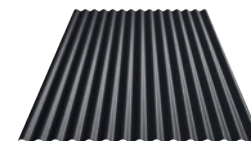
FIT^{VOLT}



INGURI



SINUS



BP2 - THE POWER OF ROOFS
Scan the code and learn more.



1.

SOLROOF

06. What is SOLROOF?

2.

Compact Roof Tiles
COMPACT SERIES

- 10. FINN 2.0
- 18. ALFA 2.0
- 26. HETA 2.0
- 34. GAMMA 2.0
- 42. STIGMA 2.0
- 50. BAVARIA Roof 2.0

3.

Steel gutter system
INGURI

- 60. Technical data
- 62. Description of elements
- 66. Advantages of INGURI gutter systems
- 70. Colours
- 71. Feedstock

4.

Corrugated and tra-
pezoidal sheets

- 74. SINUS
- 78. T7 - T18 ECO
- 80. T35 - T55

5.

Flashings
and accesories

- 84. New flashings
- 86. Flashings
- 88. Accesories

6.

Technical data and
contact

- 98. Coating properties
- 100. Colours
- 102. Helpful links
- 104. Contact Us





FIT VOLT

POWERED BY
**BP2**

What is SOLROOF?

SOLROOF is an innovative system that was created in response to the growing demand for clean energy. It is the only complete photovoltaic system on the market that is fully integrated into the steel roofing. Proprietary solutions allow for unique aesthetics of the roof and the use of various forms and shapes, which is not possible to achieve in the case of a conventional photovoltaic installation. The combination of FIT sheet metal panels and integrated FIT VOLT photovoltaic panels creates a coherent, harmonious coverage surface.

The SOLROOF integrated photovoltaic roof represents new quality that, as the first on the market, offers architects unlimited design possibilities, roofers easy and quick installation and the investor a unique visual effect, efficiency and safety of use. We achieve this by using one product, one assembly, one warranty, and one service.

INTEGRATED PHOTOVOLTAIC ROOF



Scan the code or find out more
at www.solroof.eu

THE POWER OF ROOFS





COMPACT SERIES

2.



Compact Roof Tiles COMPACT SERIES

10. FINN 2.0 - New in offer!

18. ALFA 2.0

26. HETA 2.0

34. GAMMA 2.0

42. STIGMA 2.0

50. BAVARIA Roof 2.0



The FINN 2.0 compact roof tiles

New in offer!

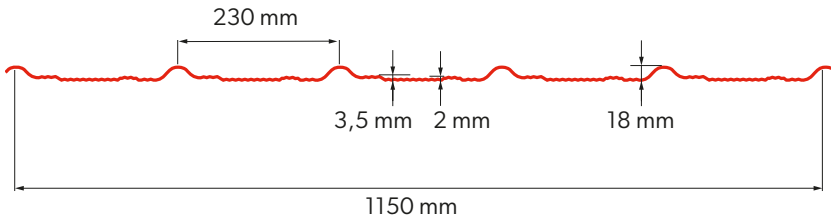
The FINN 2.0 metal tile, a novelty in the BP2 offer, is a result of further modern technical solutions. Due to the unique aesthetics, the original profile is a product for people who appreciate an unconventional approach to roofs.

Available in the COMPACT SERIES, which is a very attractive version of metal roof tiles in the form of sheets, allowing for quick installation, easy transport, and convenient storage. In addition to the flat version, FINN 2.0 is available with impressive MICRO RIB longitudinal ribbing, being the first metal roof tile in our offer with such a finish.

Ready-made mounting holes make installation much easier and faster, and their symmetry means that the sheets can be installed from any direction, which improves the comfort of the roofer's work. A wide selection of coatings and colours or very long warranty periods, reaching up to 40 years for selected coatings, allow the FINN 2.0 metal roof tile to boldly place itself among the most attractive BP2 products.



Technical data



Profiling
MICRO RIB



Flat surface

FINN 2.0 - Technical parameters [mm]	
Effective width	1150
Overall width	1190
Sheet thickness	0,5
Profile overall height	48
Embossing height	30
Module length	350
Effective area (coverage) of a single sheet	0,805 m2
Weight	ok. 4,5 kg/m2
Tab length when dividing sheets	20
Roof angle	>9°



You can find this product in our BP2 BIM library for architects and designers at www.bp2.eu/en/architects/



FINN 2.0



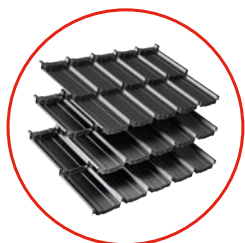
Scan code
and learn
more!

FINN 2.0

Product advantages



For more information on coatings and warranties, see page 98.
Detailed warranty conditions are specified in the warranty card.



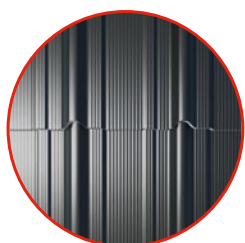
MODULARITY

Facilitates and speeds up installation. The form of two-module sheets facilitates loading, transport and unloading, and above all, facilitates and speeds up installation. Lightweight and compact sheets mean more convenient rooftop delivery and secure storage.



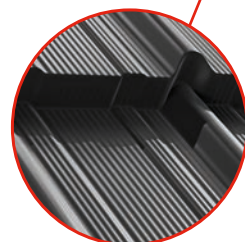
PROFESSIONAL PACKAGING

Professional packaging and product protection reduce the risk of damage during loading, transportation and unloading.



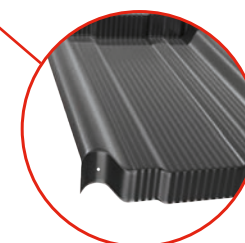
SYMMETRY

Installation in any direction. The construction of FINN 2.0 compact roof tiles allows for their installation in any direction (from the left or right side).



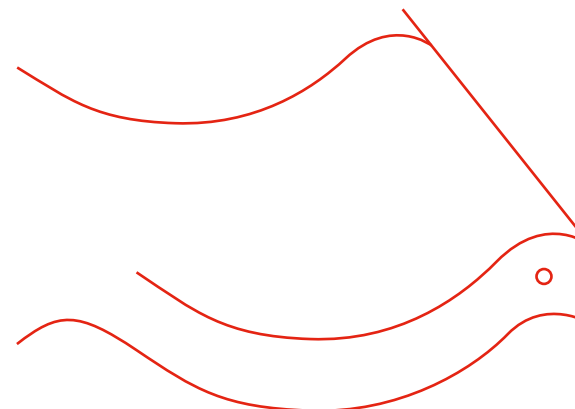
MICRO RIB PROFILING

FINN 2.0, as the first metal roof tile in our offer, is available with impressive MICRO RIB longitudinal ribbing.



READY-MADE MOUNTING HOLES

Ready-made mounting holes significantly speed up and facilitate the work of roofers.



The design of the mounting holes is protected by the Patent Office of the Republic of Poland [No. 226086] „Roofing element, sheet metal, equipped with embossing” and is registered in the European Union as European Patent Specification EP2839090B1.

FINN 2.0



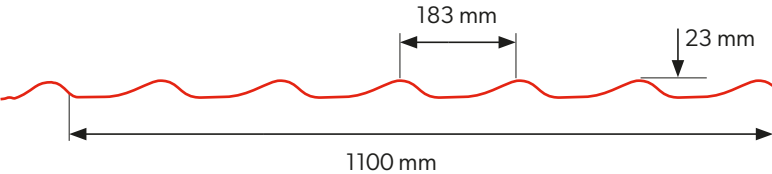
Scan code
and learn
more!



Compact roof tiles
ALFA 2.0

Technical data

ALFA 2.0 provides more possibilities, which, consequently, translate into greater satisfaction.



ALFA 2.0 - Technical parameters [mm]	
Effective width	1100
Overall width	1183
Sheet thickness	0,5
Profile overall height	53/58
Embossing height	30/35
Module length	350
Effective area (coverage) of a single sheet	0,770 m²
Weight	ok. 4,5 kg/m²
Roof angle	>9°

You can find this product in our BP2 BIM library for architects and designers at www.bp2.eu/en/architects/



ALFA 2.0



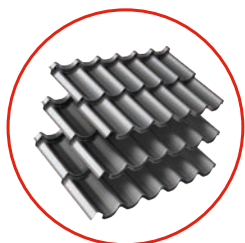
Scan code
and learn
more!

ALFA 2.0

Product advantages



For more information on coatings and warranties, see page 98.
Detailed warranty conditions are specified in the warranty card.



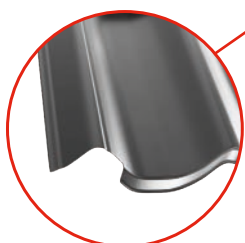
MODULARITY

The form of the two-module sheets facilitates loading, transport and unloading and, above all, makes installation easier and faster. Lightweight and small sheets mean more convenient delivery to the roof and safe storage.



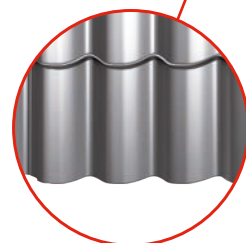
PROFESSIONAL PACKAGING

Professional packaging and product protection reduce the risk of damage during loading, transportation and unloading.



EASY LINK

A proprietary solution that makes the sheets fit together like never before. A special cut and profiling of the outermost embossing allow perfect fitting of the sheets at the point of contact.



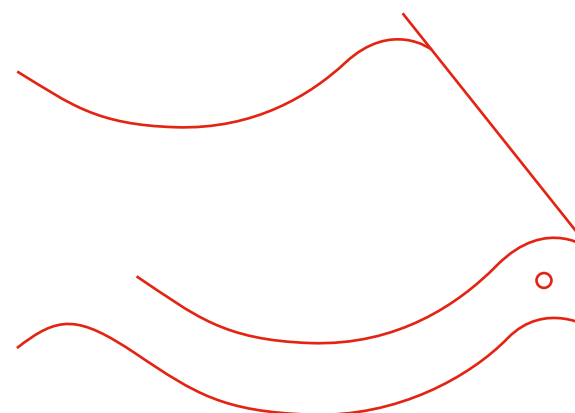
3D CUTTING

ALFA 2.0 compact roof tiles are wave-shape cut so that the horizontal joints of the sheets are less visible.



READY-MADE MOUNTING HOLES

Ready-made mounting holes significantly speed up and facilitate the work of roofers.



The design of the mounting holes is protected by the Patent Office of the Republic of Poland [No. 226086] „Roofing element, sheet metal, equipped with embossing” and is registered in the European Union as European Patent Specification EP2839090B1.

ALFA 2.0



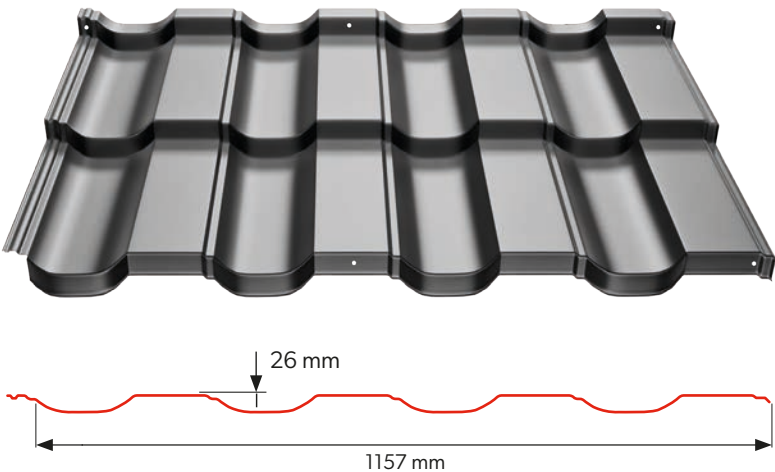
Scan code
and learn
more!



Compact roof tiles
HETA 2.0

Technical data

HETA 2.0 is a unique, original design, whose massiveness gives buildings the character of monumental modernity.



HETA 2.0 - Technical parameters [mm]	
Effective width	1157
Overall width	1202
Sheet thickness	0,5
Profile overall height	56/66
Embossing height	30/40
Module length	350
Effective area (coverage) of a single sheet	0,810 m²
Weight	ok. 4,5 kg/m²
Roof angle	>9°



You can find this product in our BP2 BIM library for architects and designers at www.bp2.eu/en/architects/



HETA 2.0



Scan code
and learn
more!

HETA 2.0

Product advantages



For more information on coatings and warranties, see page 98.
Detailed warranty conditions are specified in the warranty card.



MODULARITY

The form of the two-module sheets facilitates loading, transport and unloading and, above all, makes installation easier and faster. Lightweight and small sheets mean more convenient delivery to the roof and safe storage.



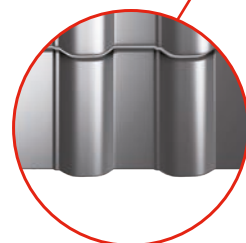
PROFESSIONAL PACKAGING

Professional packaging and product protection reduce the risk of damage during loading, transportation and unloading.



EASY LINK

A proprietary solution that makes the sheets fit together like never before. A special cut and profiling of the outermost embossing allow perfect fitting of the sheets at the point of contact.



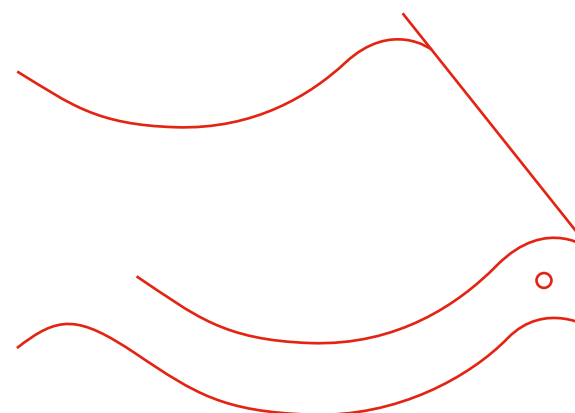
3D CUTTING

HETA 2.0 compact roof tiles are wave-shape cut so that the horizontal joints of the sheets are less visible.



READY-MADE MOUNTING HOLES

Ready-made mounting holes significantly speed up and facilitate the work of roofers.



The design of the mounting holes is protected by the Patent Office of the Republic of Poland [No. 226086] „Roofing element, sheet metal, equipped with embossing” and is registered in the European Union as European Patent Specification EP2839090B1.

HETA 2.0



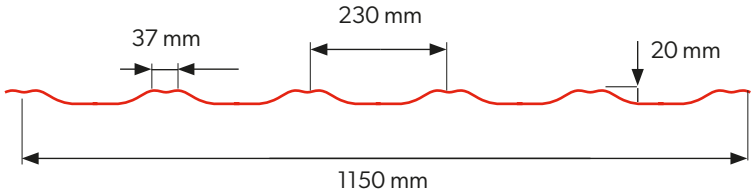
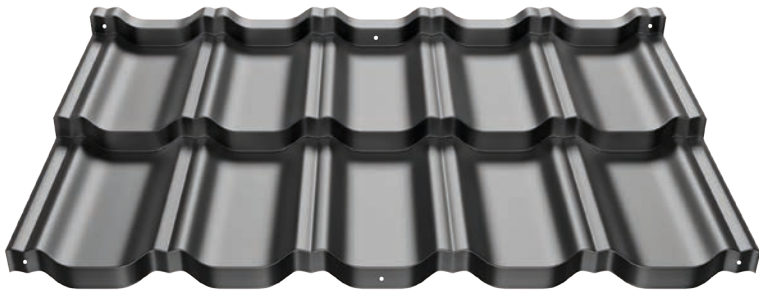
Scan code
and learn
more!

GAMMA 2.0

Compact roof tiles GAMMA 2.0

Technical data

GAMMA 2.0 provides more possibilities, which, consequently, translate into greater satisfaction.



Symetrical profile

GAMMA 2.0 - Technical parameters [mm]

Effective width	1150
Overall width	1212
Sheet thickness	0,5
Profile overall height	50/60
Embossing height	30/40
Module length	350
Effective area (coverage) of a single sheet	0,805 m²
Weight	ok. 4,5 kg/m²
Roof angle	>9°



You can find this product in our BP2 BIM library for architects and designers at www.bp2.eu/en/architects/



GAMMA 2.0



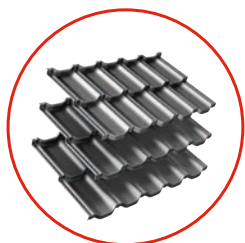
Scan code
and learn
more!

GAMMA 2.0

Product advantages



For more information on coatings and warranties, see page 98.
Detailed warranty conditions are specified in the warranty card.



MODULARITY

The form of the two-module sheets facilitates loading, transport and unloading and, above all, makes installation easier and faster. Lightweight and small sheets mean more convenient delivery to the roof and safe storage.



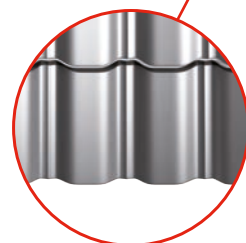
PROFESSIONAL PACKAGING

Professional packaging and product protection reduce the risk of damage during loading, transportation and unloading.



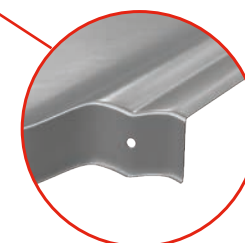
SYMETRICAL PROFILE

The design of GAMMA 2.0 compact tiles allows for installation in any direction (left or right).



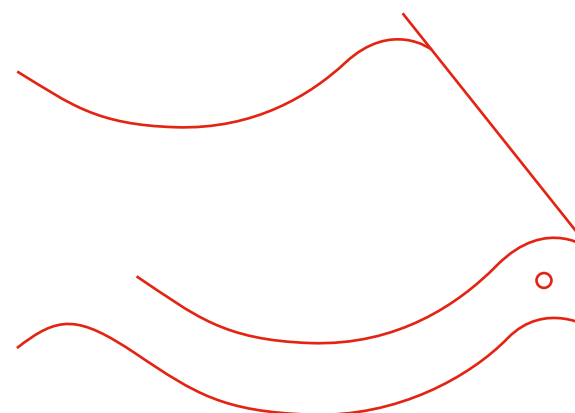
3D CUTTING

GAMMA 2.0 compact roof tiles are waveshape cut so that the horizontal joints of the sheets are less visible.



READY-MADE MOUNTING HOLES

Pre-punched mounting holes on the vertical embossing enable the sheets to be fitted together quickly and tightly. Not only does it make installation easier, but it also speeds up the work considerably.



The design of the mounting holes is protected by the Patent Office of the Republic of Poland [No. 226086] „Roofing element, sheet metal, equipped with embossing” and is registered in the European Union as European Patent Specification EP2839090B1.

GAMMA 2.0



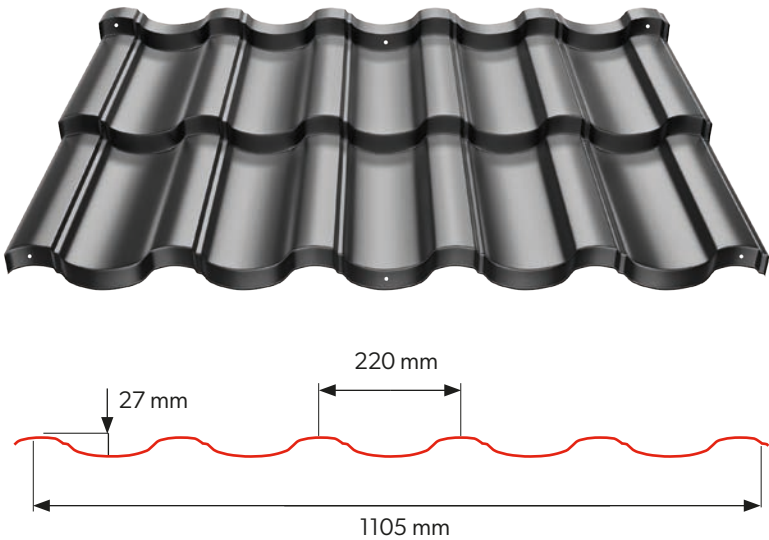
Scan code
and learn
more!

STIGMA 2.0

Compact roof tiles STIGMA 2.0

Technical data

STIGMA 2.0 combining features of roof tiles cut to dimension and modular solutions.




Ready-made mounting holes


3D Cutting


Symetrical profile

STIGMA 2.0 - Technical parameters [mm]	
Effective width	1105
Overall width	1194
Sheet thickness	0,5
Profile overall height	57/67
Embossing height	30/40
Module length	350
Effective area (coverage) of a single sheet	0,774 m²
Weight	ok. 4,5 kg/m2
Roof angle	>9°



You can find this product in our BP2 BIM library for architects and designers at www.bp2.eu/en/architects/



STIGMA 2.0



Scan code
and learn
more!

STIGMA 2.0

Product advantages

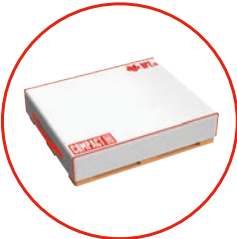


For more information on coatings and warranties, see page 98.
Detailed warranty conditions are specified in the warranty card.



MODULARITY

The form of the two-module sheets facilitates loading, transport and unloading and, above all, makes installation easier and faster. Lightweight and small sheets mean more convenient delivery to the roof and safe storage.



PROFESSIONAL PACKAGING

Professional packaging and product protection reduce the risk of damage during loading, transportation and unloading.



SYMETRICAL PROFILE

The design of STIGMA 2.0 compact tiles allows for installation in any direction (left or right).



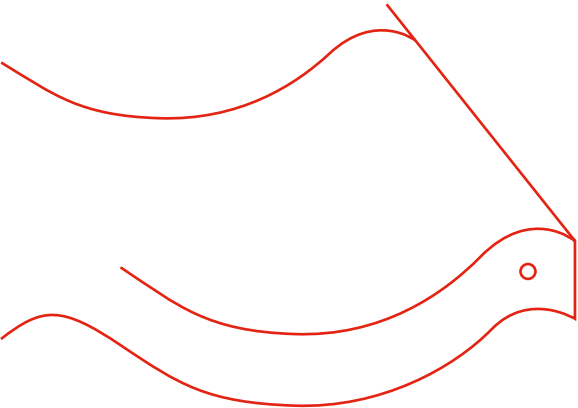
3D CUTTING

STIGMA 2.0 compact roof tiles are waveshape cut so that the horizontal joints of the sheets are less visible.



READY-MADE MOUNTING HOLES

Ready-made mounting holes significantly speed up and facilitate the work of roofers.



The design of the mounting holes is protected by the Patent Office of the Republic of Poland [No. 226086] „Roofing element, sheet metal, equipped with embossing” and is registered in the European Union as European Patent Specification EP2839090B1.

STIGMA 2.0



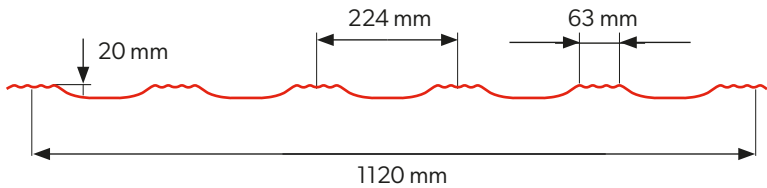
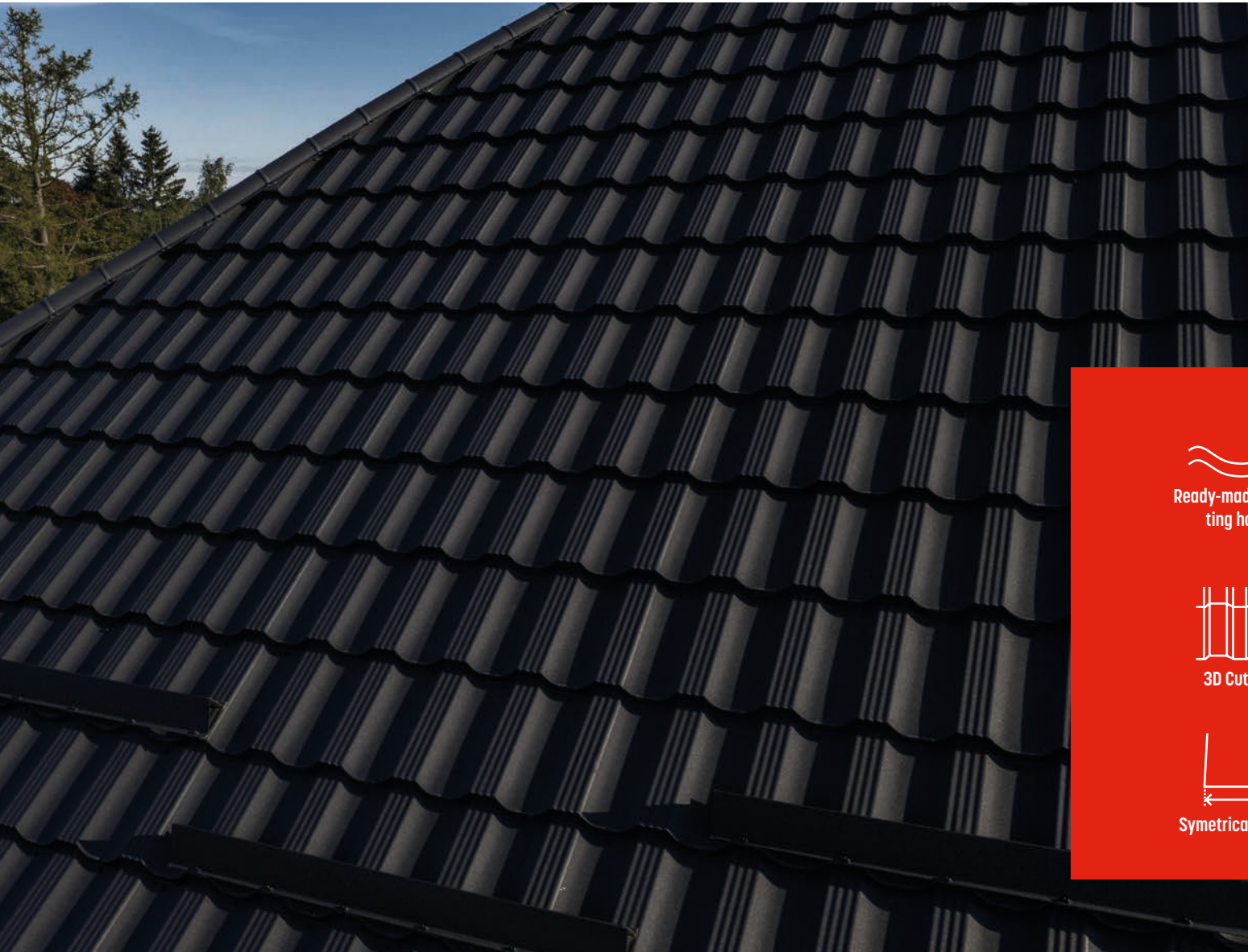
Scan code
and learn
more!



Compact roof tiles
BAVARIA Roof 2.0

Technical data

BAVARIA Roof 2.0 is a expressive, characterful pattern, well known to roofers and willingly chosen by customers, which we have enriched with the latest technological solutions.



BAVARIA Roof 2.0 - Technical parameters [mm]	
Effective width	1120
Overall width	1206
Sheet thickness	0,5
Profile overall height	50/60
Embossing height	30/40
Module length	350
Effective area (coverage) of a single sheet	0,784 m²
Weight	ok. 4,5 kg/m2
Roof angle	>9°



You can find this product in our BP2 BIM library for architects and designers at www.bp2.eu/en/architects/



BAVARIA^{ROOF} 2.0



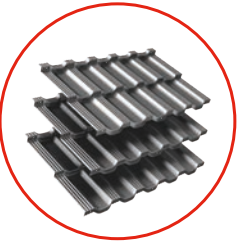
Scan code
and learn
more!



Product advantages



For more information on coatings and warranties, see page 98.
Detailed warranty conditions are specified in the warranty card.



MODULARITY

The form of the two-module sheets facilitates loading, transport and unloading and, above all, makes installation easier and faster. Lightweight and small sheets mean more convenient delivery to the roof and safe storage.



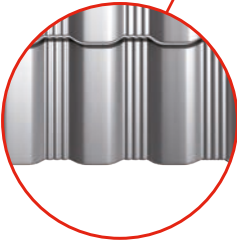
PROFESSIONAL PACKAGING

Professional packaging and product protection reduce the risk of damage during loading, transportation and unloading.



SYMETRICAL PROFILE

The design of BAVARIA Roof 2.0 compact tiles allows for installation in any direction (left or right).



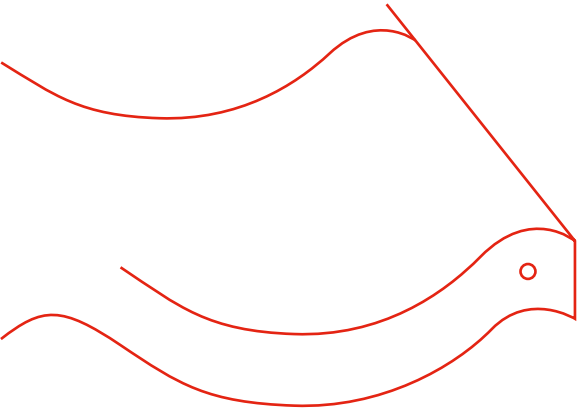
3D CUTTING

BAVARIA Roof 2.0 compact roof tiles are wave-shape cut so that the horizontal joints of the sheets are less visible.



READY-MADE MOUNTING HOLES

Ready-made mounting holes significantly speed up and facilitate the work of roofers.



The design of the mounting holes is protected by the Patent Office of the Republic of Poland [No. 226086] „Roofing element, sheet metal, equipped with embossing” and is registered in the European Union as European Patent Specification EP2839090B1.

BAVARIA^{ROOF} 2.0



Scan code
and learn
more!



INGURI



3.

Steel gutter system INGURI

60. Technical data

62. Description of elements

66. Advantages of INGURI gutter
systems

70. Colours

71. Feedstock



Technical data

The use of a proper gutter system allows efficient drainage of water from the roof covering which is crucial for its durability and functionality. It also protects the façade of the building from damage caused by moisture.

INGURI 125/87 and 150/100 systems are complete gutter systems, manufactured from top quality steel coated on both sides. All system components have been designed to ensure correct fit and easy and quick installation.

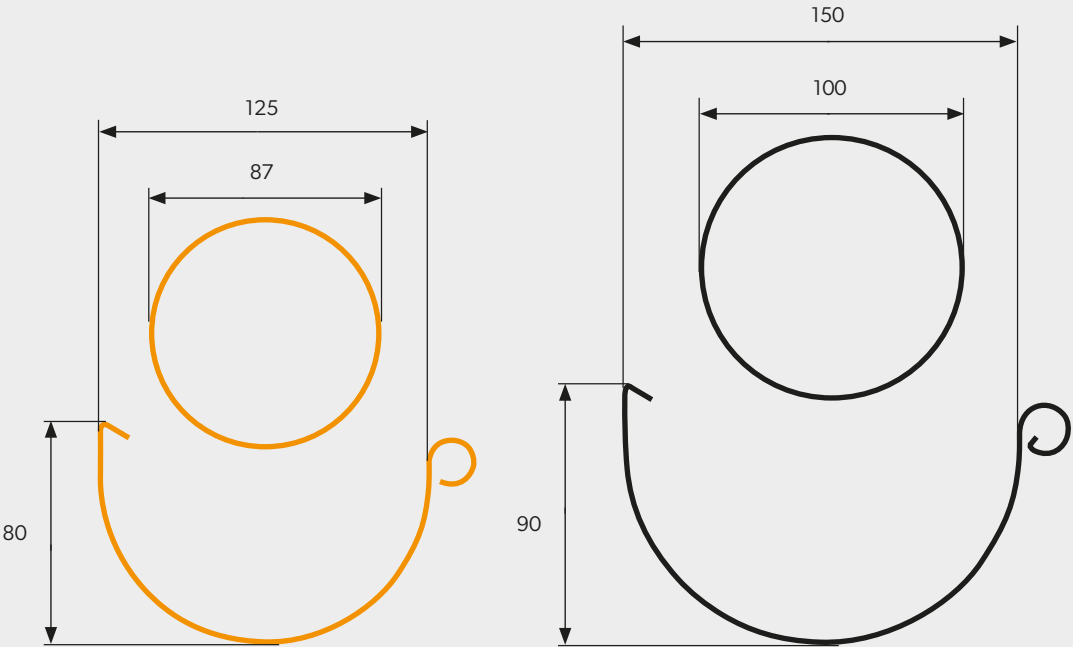
The shape and depth of the gutters ensure effective water drainage even during heavy and prolonged rainfall.



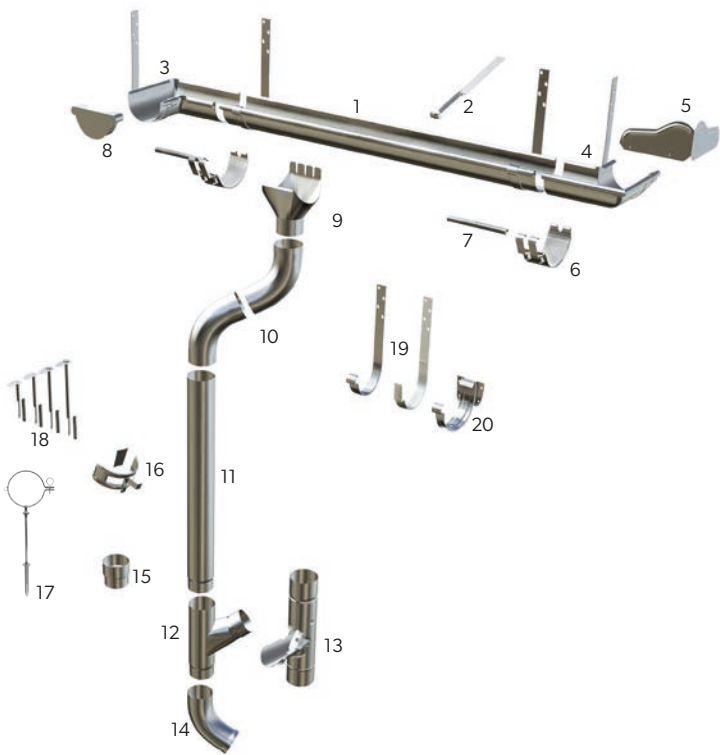
INGURI 125/87

INGURI 150/100

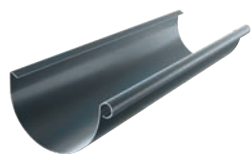
dimensions in mm



Description of elements



1	Gutter
2	Gutter support
3	Inner Corner
4	Outer corner
5	Corner cover
6	Gutter fasteners
7	Fastener stabilizer
8	Gutter end cap
9	Gutter outlet
10	Drain pipe elbow
11	Drain pipe
12	Tee pipe
13	Cleanout
14	Spout
15	Sleeve
16	Drain pipe clamp half
17	Screw clamp
18	Dowels for screw clamp
19	Top rafter hooks
20	Face hook

**GUTTER**

The shape of INGURI gutters is specially designed to ensure high efficiency in draining water. They have great depth and the proper profile to effectively collect water from the roof slope even during heavy rainfall without the risk of overflow. We manufacture gutters in standard lengths of 4 and 3 m.

**INNER/OUTER CORNER**

Aesthetic and functional connection of gutters in the corners of the building is ensured by gutter corners. Our range includes outer and inner corners with a standard 90° angle as well as 135° versions

**GUTTER FASTENER**

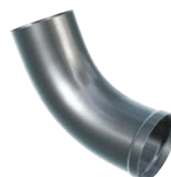
The individual sections of the gutter or the gutter with the corner are connected by means of a dedicated fastener. INGURI systems are equipped with a clip fastener (snap mechanism) to ensure a strong and durable joint with quick and easy installation. The standard fitting of the fastener with a gasket guarantees a tight connection while the execution of the element of sheet metal of the same colour as the remaining parts of the system ensures high aesthetics. The fastener is equipped with a stabiliser as standard, which additionally stiffens the joint.

**TEE PIPE**

If it is necessary to discharge water from two drain pipes into one spout, a tee pipe should be used.

**DRAIN PIPE**

The drain pipe collects water from the gutters and directs it to the spout. The design and proper installation of this element greatly affects the functionality of the entire drainage system. The gutter drain of the INGURI systems is very well matched to the other components, ensuring a tight and solid installation. Available versions: 125/87, 125/100, 150/100.

**SPOUT**

The starting element of a gutter system is the spout, which carries the water away from the drain pipe. The product on offer has an angle of 63° and a section of 87 or 100 mm.

**CORNER COVER**

The cover prevents water from overflowing through the corner. This is particularly important if it is fitted to an inner corner that receives large amounts of water from the valley gutter. It also has an ornamental role.

**DRAIN PIPE ELBOW**

It allows the system components to be adapted to different roof and façade shapes. The offered product is bent at an angle of 63°.

**Drain Pipe**

INGURI system drain pipes have a cross-section of 87 and 100 mm. Standard pipe lengths are 3m and 1m. Fixing to the façade is carried out using dedicated clamps to ensure adequate distance from the building wall.

**TOP RAFTER HOOK**

The top rafter hook is mounted directly to the rafters of the roof.

**FACE HOOK**

The face hook is a gutter fixing element mounted to the eaves fascia board.

**CLEANOUT**

This element stops and enables the removal of debris falling into the drain pipe together with the water, such as leaves, feathers and small branches. This helps to maintain the system's patency and, as a result, its full functionality.

**GUTTER SUPPORT**

An element for additional fixing of the gutter to the roof structure. It prevents deformation or breakage of the gutter as a result of heavy loads, e.g. due to snow sliding off the roof.

**GUTTER END CAP**

A component used to close the gutter at its ends. The offered cap has a large depth and is additionally equipped with a gasket.

**PIPE CLAMP / SCREW CLAMP**

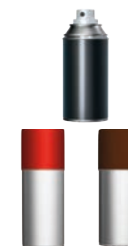
We offer two types of clamps: those with mounting holes for any type of fastener and those adapted for a dedicated connector.

**SLEEVE**

Drain pipes are connected by means of a sleeve. The precise manufacture of this element means that there is no risk of leakage at the joint.

**DOWELS FOR SCREWED CLAMPS**

We supply dowels for clamps in three lengths: 160, 250 and 300mm.

**ACCESSORIES**

We ensure the availability of accessories for gutter systems: gliding spray, silicones and touch-up paint.

INGURI



Scan code
and learn
more!

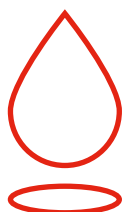


Advantages of INGURI gutter system



PROTECTION OF YOUR HOME

Using the right gutter system allows water to be efficiently drained from the roofing material which is crucial to its durability and functionality. It also protects the facade of the building from the effects caused by moisture. Gutter system INGURI 125/87 and 150/100 is a complete system produced from the highest quality organic coated steel or metallic coating Aluzinc. This system will effectively protect your home.



RELIABLE TIGHTNESS

The joint with the stabilizer is equipped with a gasket that ensures the tightness of the system even under extreme weather conditions. Complementary to the gutter is a bottom, equipped with gaskets, with the possibility of riveting and screwing.



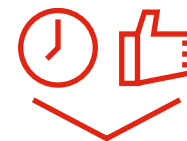
EXCELLENT WATER DRAINAGE

INGURI gutters are much deeper than competitive products, this design prevents the phenomenon of overflow of water outside the gutter, which occurs during heavy rainfall. Ergonomic gutters protect the facade against stains.



HIGH RESISTANCE TO WEATHER CONDITIONS

Used for the manufacture of INGURI gutter systems sheet metal with a thickness of 0.6 mm is coated with an organic layer. The coating has a very high resistance to atmospheric factors and mechanical damage and influence of sun rays (UV) responsible for loss of color. INGURI systems are also produced from Aluzinc 185 sheets with an additional Easyfilm polymer coating on both sides.



SIMPLE INSTALLATION

INGURI system consists of perfectly matching elements thanks to which installation is easy and quick.



PEACE OF MIND FOR YEARS

INGURI system is covered by 30-years manufacturer warranty. Such a long warranty period is ensured by high quality of the input material and many years of experience of the manufacturer. By using materials with the highest technical parameters, we give our customers a product that provides peace of mind for years.



INGURI ON THE MOVE

The long pieces are protected with a special foil sleeve so that the delivered material remains flawless. The gutters are transported in a specially equipped vehicle with balcony systems to warranty the safety of the material.



WIDE RANGE OF COLORS

The offer of a complete gutter system INGURI includes a wide range of colors that allow the gutter system to put the finishing touches to the roof. The right choice of gutter system guarantees a flawless effect of the investment and harmony.



COMPLETE OFFER

When you buy a complete roofing with gutter system INGURI, you get a longer warranty.

30 years ULTIMAT [UTK] coating.
40 years HERCULIT [HC] coating.

INGURI



Scan code
and learn
more!



Colours

INGURI [PUR/PUR]

INGURI pipes are manufactured from sheet with hot galvanized feed, which after chemical cleansing and undergoing passivation is coated with anti-corrosion coats and a decorative, organic coat. The sheet is 0,6 mm thick, with the organic layer being material of high resistance to atmospheric conditions and mechanical damage, as well as UV radiation that causes color loss

CHERRY

GRAPHITE

BRICK

BROWN CHOCOLATE

DARK BROWN

WHITE *

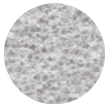
BLACK

Coatings thickness	Corrosion resistance	UV resistance	Warranty period (years)
50 µm	RC4	RUV3	30

Aluzinc INGURI [AZ 185]

It is a steel sheet coated on both sides with an aluminium-zinc alloy in a process similar to hot-dip galvanizing. Thanks to this, it meets the strictest requirements for sheet resistance to atmospheric corrosion and corrosion in humid environments. It also has a protective Easyfilm polymer coating.

Coating thickness	Corrosion resistance	UV resistance	Warranty period (years)
185 g/m2	RC3	n/a	15



ALUZINC

! * The white colour is only available for the INGURI 150/100 system.

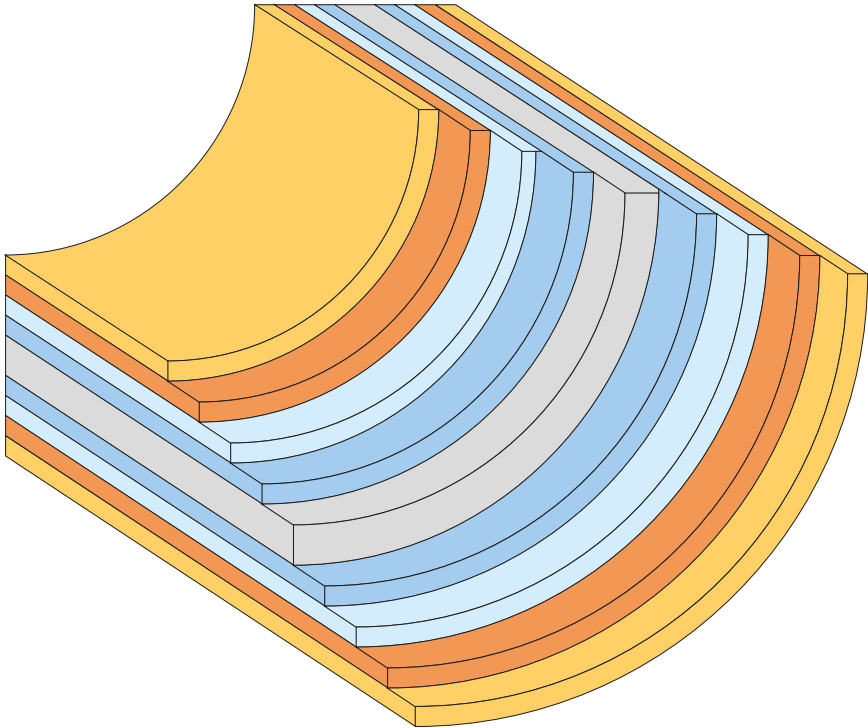
! Printing technology does not allow for faithful colour rendition, so the colours shown are approximate and may differ from actual colours.

Feedstock

The suppliers of material for the manufacture of INGURI gutters are renowned steel corporations, providing the highest quality steel in the form of Aluzinc sheets – galvanised and coated – which are the input material for the manufacture of gutters.

Careful selection of the feedstock supplier has a major impact on the quality and durability of the product. This is expressed by its resistance to corrosion and discolouration. This is why INGURI gutter systems are covered by a long-term warranty.

Coated sheet cross-section



Key

Organic coating

Primer coating

Corrosion protection coating

Metallic coating

Steel core

! Detailed warranty conditions are specified in the warranty certificate.



SINUS

T7 - T55

4.



Corrugated and trapezoidal sheets

74. SINUS

78. T7 - T18 ECO

80. T35 - T55



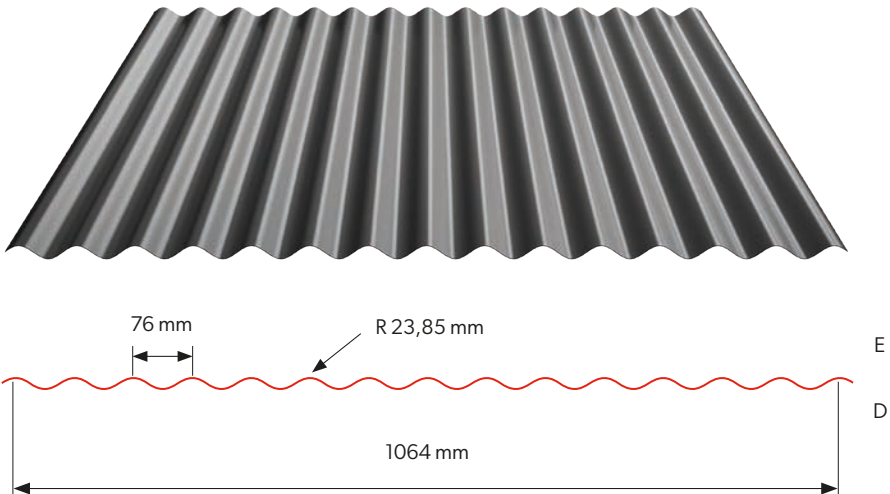
Corrugated sheet SINUS

Corrugated steel sheets which have been used in large format facilities also prove to be effective as a roofing or facade material in smaller buildings, such as garages or umbrella roofs. Also, these products are more often employed in modern urban residential development.

The corrugated profile SINUS is a successful combination of a traditional shape and latest protective coatings. Drawing on the aesthetics of classic forms, it offers a wide range of finishing options giving the roof an interesting visual effect.



Technical data



Technical parameters [mm]	
Effective width	1064
Overall width	~1100
Profile height	18
Sheet thickness	0,5-0,8
Max sheet lenght	8000
Roof angle	> 6°

For more information on coatings and warranties, see page 98.
Detailed warranty conditions are specified in the warranty card.

You can find this product in our BP2 BIM library for architects and designers at www.bp2.eu/en/architects/



WARRANTY
UP TO 40 YEARS



EASY
INSTALLATION

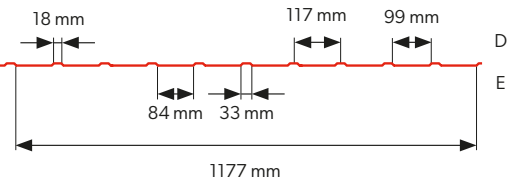
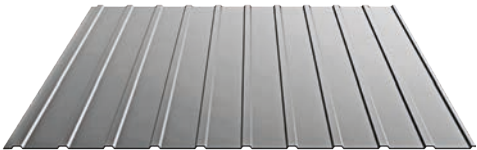


PERFORATION
OPTIONS

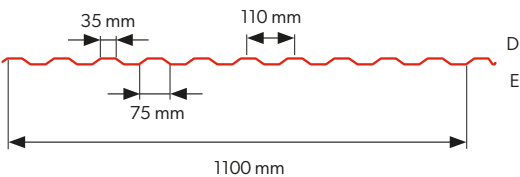
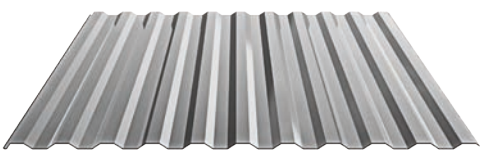
SINUS



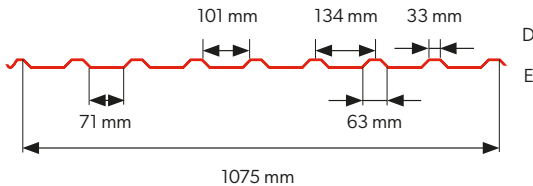
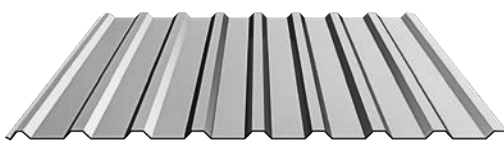
Scan code
and learn
more!



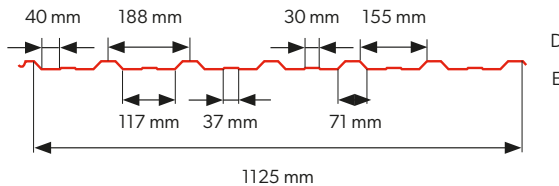
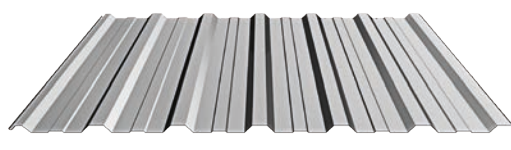
Technical parameters [mm]	
Effective width	1177
Overall width	~1210
Profile height	7,0
Sheet thickness	0,5-1,0
Max sheet lenght	6000
Roof angle	> 6°



Technical parameters [mm]	
Effective width	1100
Overall width	~1161
Profile height	13
Sheet thickness	0,5-1,0
Max sheet lenght	8000
Roof angle	> 6°



Technical parameters [mm]	
Effective width	1075
Overall width	~1125
Profile height	17
Sheet thickness	0,5-1,0
Max sheet lenght	12 000
Roof angle	> 6°



Technical parameters [mm]	
Effective width	1125
Overall width	~1173
Profile height	17
Sheet thickness	0,5-1,0
Max sheet lenght	12 000
Roof angle	> 6°

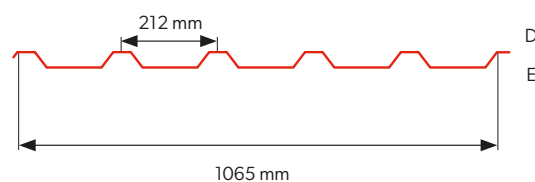
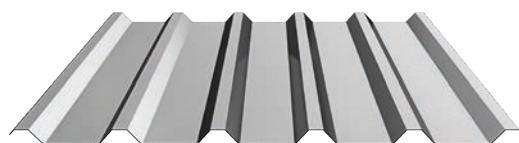


We offer perforation of trapezoidal sheets.
Details (shape, size, hole pattern, etc.)
are agreed individually with the sales department.

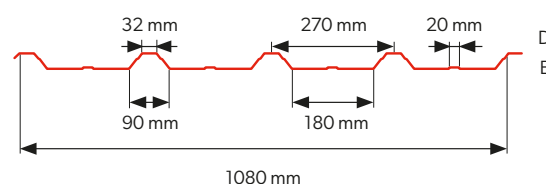
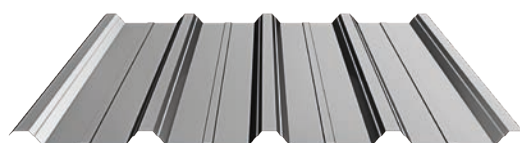


You can find this product in our BP2 BIM library for architects
and designers at www.bp2.eu/en/architects/

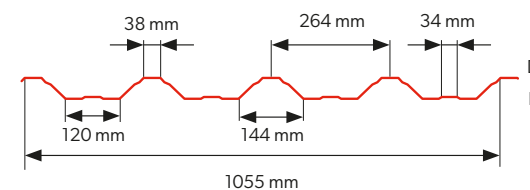
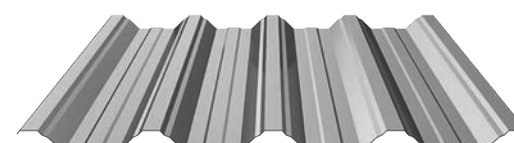


T35**T35 ECO****T50****T55****Technical parameters [mm]**

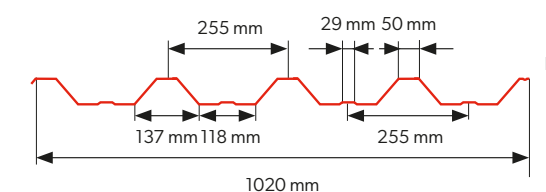
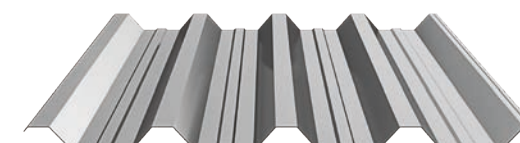
Effective width	1065
Overall width	~1106
Profile height	34
Sheet thickness	0,5-1,0
Max sheet length	12 000
Roof angle	> 6°

**Technical parameters [mm]**

Effective width	1080
Overall width	~1120
Profile height	34
Sheet thickness	0,5-1,0
Max sheet length	12 000
Roof angle	> 6°

**Technical parameters [mm]**

Effective width	1055
Overall width	~1100
Profile height	47
Sheet thickness	0,5-1,0
Max sheet length	12 000
Roof angle	> 4°

**Technical parameters [mm]**

Effective width	1020
Overall width	~1054
Profile height	53
Sheet thickness	0,5-1,0
Max sheet length	12 000
Roof angle	> 4°

**We offer perforation of trapezoidal sheets.**

Details (shape, size, hole pattern, etc.)
are agreed individually with the sales department.



You can find this product in our BP2 BIM library for architects
and designers at www.bp2.eu/en/architects/





5.

Flashings and accessories

84. New flashings

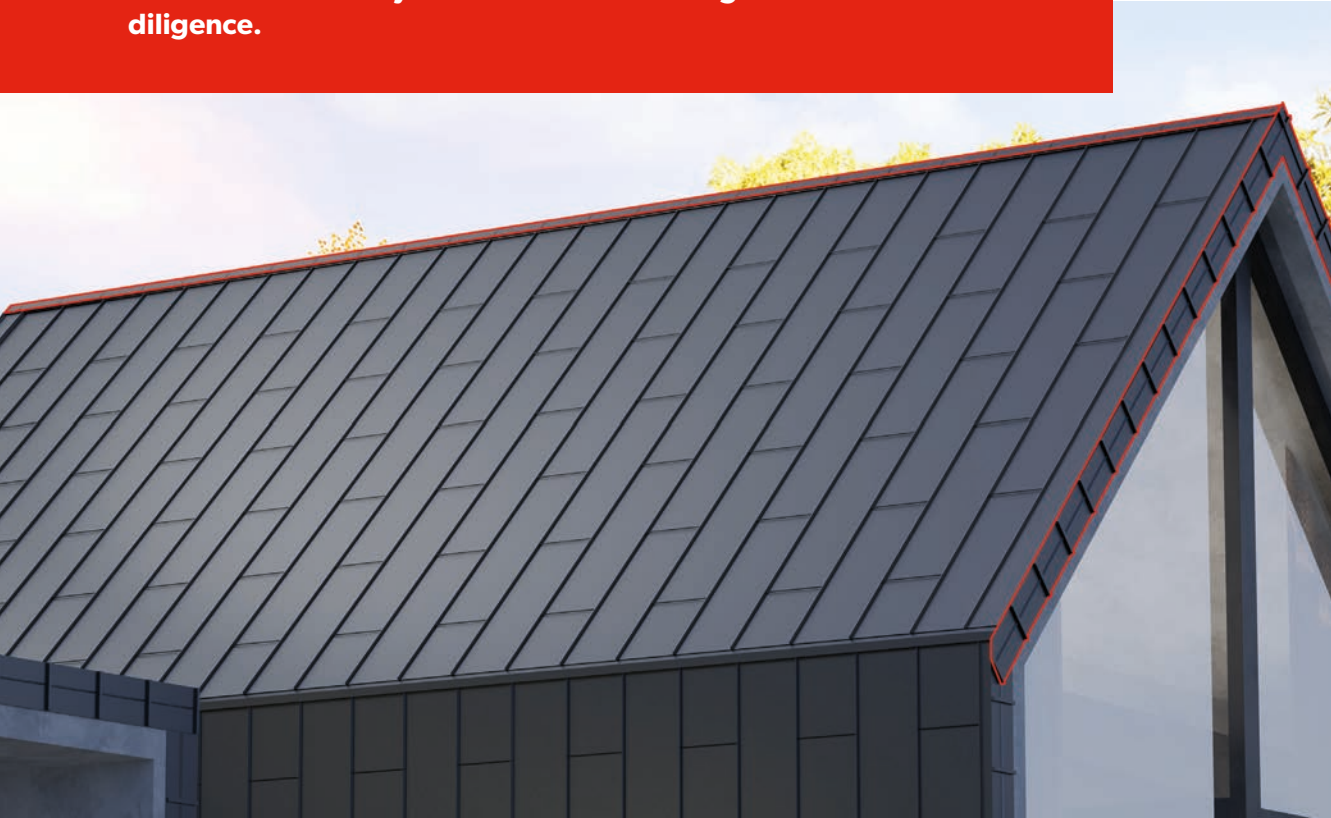
86. Flashings

88. Accesories

Flashings

Ridge tiles and flashings are an inseparable part of any properly executed roofing. They protect against seepage and overhanging while, at the same time, giving the roof an aesthetically pleasing appearance. The flashings are made of sheet metal having the same range of coatings and colours as our tile roofing, trapezoidal sheet metal, and roof panels.

BP2 Brand is continuously developing and tailoring their products to the needs of their customers. Hence, we have updated our flashings offer that saves installation time on the roof and ensures solid execution as well as highest aesthetics. Their professional installation is the key to the success of roofing details crafted with diligence.



BP2 - Flashings, details, advantages, dimensions.
Scan the code and learn more.



Barge flashing ADAPT
- NEW



Sheet thickness	0.5 mm
Width	550 mm
Height	240-320 mm



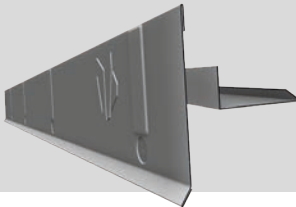
Barge flashing III
- NEW



Sheet thickness	0.5 mm
Width	2000 mm
Height	150 mm



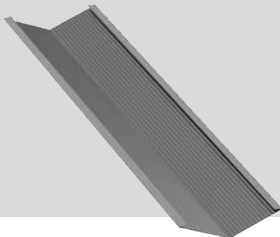
Barge flashing II
- NEW



Sheet thickness	0.5 mm
Width	2000 mm
Height	150 mm



Valley gutter
- NEW



Sheet thickness	0.5 mm
Width	2000 mm
Height	95 mm



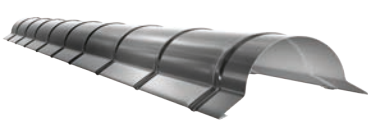
Trapezoidal ridge



Sheet thickness	0.5 mm
Width	2000 mm
Height	90 mm



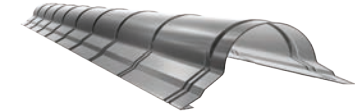
Barrel ridge



Sheet thickness	0.5 mm
Width	2000 mm
Height	75 mm



Wide barrel ridge



Sheet thickness	0.5 mm
Width	2000 mm
Height	109 mm



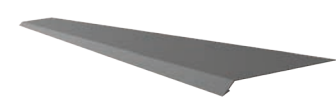
Ridge end cap



Sheet thickness	0.5 mm
Width	220 mm
Height	80 mm



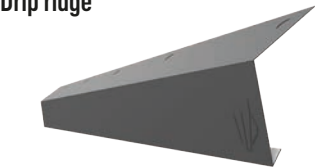
Eaves trim



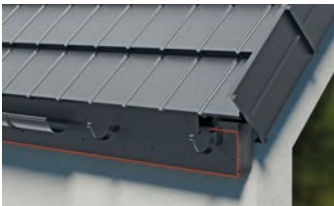
Sheet thickness	0.5 mm
Width	2000 mm
Height	20 mm



Drip ridge



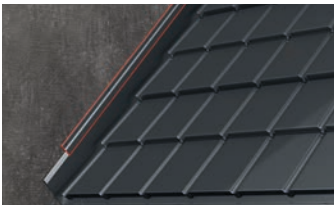
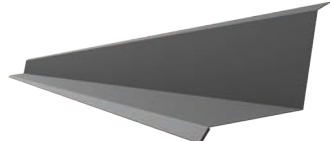
Sheet thickness	0.5 mm
Width	2000 mm
Height	120 mm



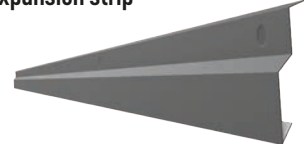
Universal gutter fascia / barge flashing extension



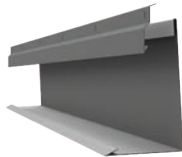
Wall flashing I



Expansion strip



Wall flashing with expansion strip



Universal ventilation flashing



Snow guard



Sheet thickness	0.5 mm
Width	2000 mm
Height	190 mm

Sheet thickness	0.5 mm
Width	2000 mm
Height	125 mm

Sheet thickness	0.5 mm
Width	2000 mm
Height	65 mm

Sheet thickness	0.5 mm
Width	2000 mm
Height	135 mm

Sheet thickness	0.5 mm
Width	2000 mm
Height	26 mm

Sheet thickness	0.5 mm
Width	196 mm
Height	70 mm

Clamping systems



Farmer Screws - Self-drilling screws with EPDM washer for Clamping systems of sheet metal, tin roofing and flashings to wood substrate. Farmer type screw with TX socket.



Farmer Screws - Self-drilling screws with EPDM washer for Clamping systems of sheet metal, tin roofing and flashings to wood substrate. Farmer type screw.



Self-drilling screws - Self-drilling screw for Clamping systems thin sheets overlapping.



Clamping screws - Self-tapping screw for Clamping systems of steel elements to profiles and overlapping connection of steel elements.



Sandwich panel screws - Self-drilling screw with EPDM aluminum washer for Clamping systems of sandwich panels to steel substrate.

CLAMPING SYSTEMS	Dimensions	unit
	[mm]	
Farmer Screws	4,8 x 19	250 pcs
Farmer Screws	4,8 x 35	250 pcs
Farmer Screws	4,8 x 55	200 pcs
Farmer Screws TORX	4,8 x 35	250 pcs
Self-drilling screws max. 3,0 mm	4,8 x 19	250 pcs
Self-drilling screws max. 5,0 mm *	5,5 x 25	250 pcs
Self-drilling screws max. 12,0 mm *	5,5 x 32	250 pcs
Clamping screws L	4,2 x 32	500 pcs
* Product available on request.		



Roof comunication systems



Roof Chimney sweep bench - Chimney sweep bench.
With a large, non-slip surface. Available in lengths from 0,4 to 3,0 m. Safe width - 250 mm.systems



Chimney step - Roof step is one of the components of the communication system on the sloping roof. It consists of a solid mounting part, a non-slip surface for the footing and a handle.

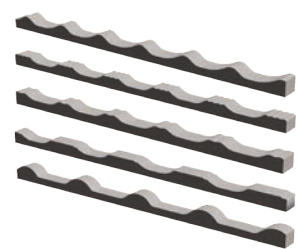


Snow fence - Snow fence system is a stable and effective solution to protect against sliding from the roof masses of snow.

ROOF COMUNICATION SYSTEMS	unit
Snow fence 2,0 m	pcs
Snow fence pipe LAMBDA 2.0 / IZI 2,0 m	set
Snow fence bracket for trapezoidal metal sheets	pcs
Snow fence bracket for metal roofing tiles	pcs
Fence bracket for IZI modular tiles	pcs
Chimney sweep bench 0.40 m	pcs
Chimney sweep bench 0.60 m	pcs
Chimney sweep bench 0,80 m	pcs
Chimney sweep bench 1,00 m	pcs
Chimney sweep bench 2,0 m	pcs
Chimney sweep bench 3,0 m	pcs
Step bracket	pcs
Bench/footing bracket for trapezoidal sheet metal	pcs
Bench/footing bracket for tin plates	pcs
Step for chimney sweep	pcs
Wall bench bracket	pcs
Step bracket	pcs



Seal systems and ventilation chimneys



Profiled gasket - Profiles shaped to mimic the corresponding roofing profile with holes are designed to protect gaps in roofs.



Ridge Tape - Vapor-permeable ridge tape is used to seal and ventilate the ridge.



Roofing silicone - Plastic-flexible, one-component rubber roofing putty for sealing flashing.



Vent stack - Vent chimneys are used as an element that terminates the gravity ventilation line in buildings - they are an alternative to masonry ventilation chimneys.

SEAL SYSTEMS AND VENTILATION CHIMNEYS	Dimensions	unit
	[mm]	
Profile gasket. ALFA, T14, T18, T18 ECO ridge	~ 1000	pcs
Profile gasket. ALFA, T14, T18, T18 ECO set	~ 1000	set
Profile gasket. STIGMA, HETA, GAMMA/ZET, BAVARIA ridge profile gasket	~ 1000	pcs
Profile gasket. STIGME, HETA, GAMMA/ZET, BAVARIA set	~ 1000	set
Profile gasket. T35, T35 ECO, T55, T60 ridge	~ 1000	pcs
Profile gasket. T35, T35 ECO, T50, T55 set	~ 1000	set
Profile gasket. T60 set	~ 1000	set
Wedge seal	1000	pcs
Wedge seal - expanding PURS	1000	pcs
ALU ridge tape	240 mm x 5 mb	mb
Roofing silicone	280 ml	pcs
Ventilation chimney for tile, ZET - uninsulated	Ø 125	pcs
Ventilation chimney for tile roof, ZET - insulated	Ø 125	pcs
Ventilation chimney for trapezoidal sheet metal - uninsulated	Ø 125	pcs
Ventilation chimney for trapezoidal sheet metal - insulated	Ø 125	pcs
Ventilation chimney for IZI modular roofing tile	Ø 110	pcs



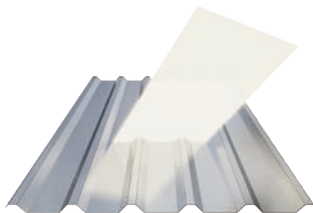
Foils, membranes, lacquers and skylights



Membranes - Roof membranes are used as a layer of initial covering under sloped roofing. They prevent precipitation suspended there from getting into the thermal insulation and roof structure: rain and snow.



Paints and varnishes - Matching varnishes are used to protect cut edges and any damage to the covering film caused during installation.



Paints and Skylights - Profiled polycarbonate sheets for roofing and walls. They are characterized by exceptional strength properties - excellent transparency, shape retention at high temperatures and impact resistance.- Matching varnishes are used to protect cut edges and any damage to the covering film caused during installation.

FOILS, MEMBRANES, LACQUERS AND SKYLIGHTS	Dimensions	unit
BP2 Protect 100 g membrane	1,6 m x 50 mb	m2
BP2 Protect 120 g membrane	1,6 m x 50 mb	m2
BP2 Protect membrane 140 g	1,6 m x 50 mb	m2
Roof screen - 265 g	1,6 m x 25 mb	m2
Spray-on touch-up paint	150 ml	pcs
Repair paint can	200 ml	pcs
Skylight T18 ECO Total width 1.169 m Length 3 m	3,507	m2c
Skylight T18 Overall width 1,117 m Length 3 m	3,351	m2c
Skylight T35 Overall width 1,105 m Length 3 m	3,315	m2c





6.

Technical data and contact

98. Coating properties

100. Colours

102. Helpful links

104. Contact Us

Coating properties

Code	Coating thickness	Corrosion resistance	UV resistance	Warranty period (years)
HERCULIT [HC]	35 µm	RC4	RUV4	40
ICE COVER ZM [ICep]	35 µm	RC3	RUV4	35
Aluzinc [AZ 185]	185 g/m2	RC3	n/a	25
ULTIMAT 35 Standard [UTK]	35 µm	RC4	RUV4	20*
POLIESTER Standard [RAL]	25 µm	RC3	RUV2	10
MULTILAYER 40 [MLT]	40 µm	RC3	RUV3	10

The above summary is indicative.

* Warranty period extended to 30 years for COMPACT SERIES kits in ULTIMAT [UTK] coating purchased together with INGURI gutter system.

Sheets with ICE COVER ZM coatings - do not require paint protection of cut edges.



Detailed warranty conditions are specified in the warranty card. For MODULAR SERIES modular roof tiles and COMPACT SERIES compact roof tiles, the warranty becomes valid after registration on the website www.warranty.bp2.eu.

SOUNDCONTROL
sound-absorbing coating



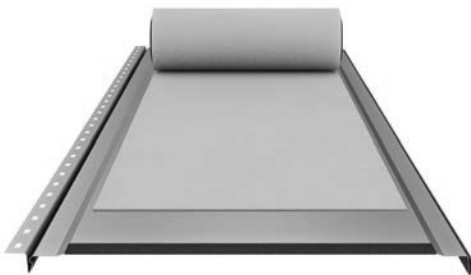
The use of SOUNDCONTROL sound-absorbing coating on steel roofing and facade coverings effectively increases their sound insulation level.

As a result, both precipitation noise and sound propagation inside the object are reduced. Coverings with SOUNDCONTROL coating are used in all kinds of facilities, which due to their size or purpose, require high acoustic standards, such as production halls, sports facilities, commercial and residential buildings.

Due to the very high degree of moisture absorption by the SOUNDCONTROL coating, it also acts as an anti-condensation membrane. Soundcontrol is applied to a strip of flat sheet before profiling. This ensures perfect adhesion over the entire roofing surface.



Now the SOUNDCONTROL coating sectional application is also available for the LAMBDA 2.0 product

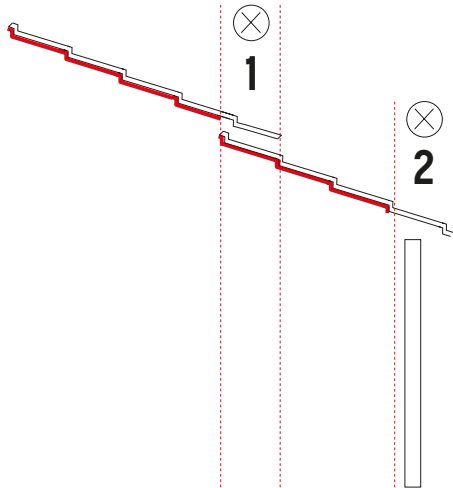


Installation instructions

During installation, the soundproofing coating SOUNDCONTROL should absolutely be removed in places that do not provide an outlet for moist air.

This applies primarily to:

- 1. sections of the covering directly above the wall and outside the building perimeter,
- 2. the place where the sheets overlap
 - When the covering consists of of several sheets joined from the length.



ATTENTION! The bonding is permanent. DRIPSTOP cannot be removed and re-applied. When using DRIPSTOP on the roofing of farm buildings, it is recommended to wash it with a fungicide at least once a year. When installing the covering, the phenomenon of capillary rise should be eliminated. The DRIPSTOP coating must therefore be removed manually in the eaves and ridge area (at least 10 cm spacing). Anti-condensation coated sheets should adhere tightly to the supports and frames of the structure. Therefore, regardless of the profile, they should be fixed to the supports in each lower wave.

Colours

HERCULIT [HC]



ULTIMAT [UTK]



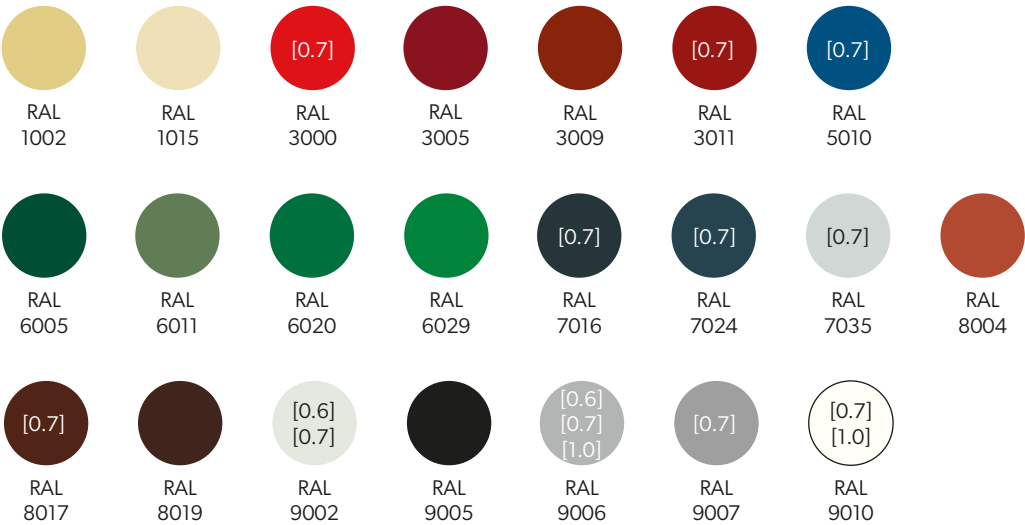
ICE COVER ZM [ICep]



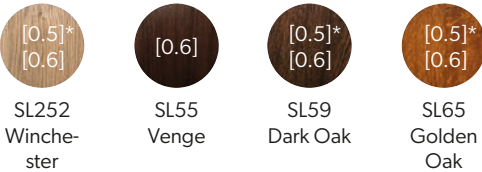
MAT 35 Standard [TK]



POLIELSTER Standard [RAL]



SP35 Multilayer [SP35/MULTI]

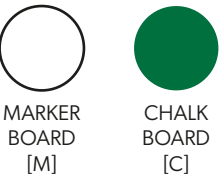


*Also available in double-sided coated version: Winchester - SH252/SH252, Dark Oak - SH59/SH59, Golden Oak - SH65/SH65.

Metallic coating



Board sheets



In addition, custom colours and coatings are available upon individual request, outside of the palette shown.



Printing technology does not allow for faithful colour rendition, so the colours shown are approximate and may differ from actual colours.

	Standard sheet thickness is 0.5 mm
[0.6]	Material also available in 0.6 mm thickness
[0.7]	Material also available in thickness of 0.7 mm
[0.8]	Material also available in 0.8 mm thickness
[1.0]	Material also available in 1.0 mm thickness

BP2 - Helpful links



BP2 website



BP2 Academy of Masters



Login to Eprofil system



Documents - installation manuals



Warranty registration



Videos - installation manuals



Videos - roof realizations



facebook.com/bp2eu



instagram.com/bp2_eu



linkedin.com/company/bp2eu



youtube.com/@BP2eu



Contact Us

BP2 sp. z o.o

ul. Nadwiślańska 11/139
30-527 Kraków

TAX ID: 6762431701

www.bp2.eu



- Distributors
- Sales representatives
- Authorized contractors
- Technical consultancy

distributor details/stamp



All numerical values and physicochemical characteristics of the products given in the catalogue are indicative and illustrative. The company does not assume any responsibility for any errors or mistakes in editing and printing as well as reserves the right to make changes to product specifications.



This catalog does not constitute an offer within the meaning of the Civil Code.
Copyright © 2023 BP2. All rights reserved.





Modular roofing tiles
MODULAR SERIES



Compact roofing tiles
COMPACT SERIES



Steel roofing tiles
CLASSIC SERIES



Retro roof tiles
RETRO SERIES



Roof panels
PANEL SERIES



INTEGRATED
PV PANELS



Steel roof gutter system
INGURI



**TRAPEZOIDAL
SHEETS**



**FLAT METAL
SHEETS**



FLASHINGS



ACCESORIES



Roof Sandwich
PANELS



Wall Sandwich
PANELS



Facade cladding
SKRIN, LINEA, SINUS



Wall cassette &
PROSYSTHERM



Uncoiling and slitting
SERVICES



Cut to lenght
SERVICES



PERFORATION
of sheets

