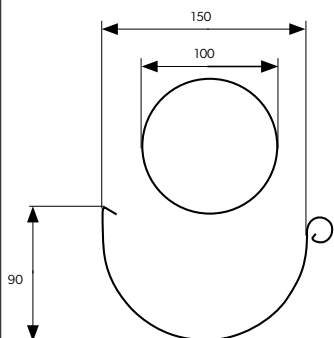
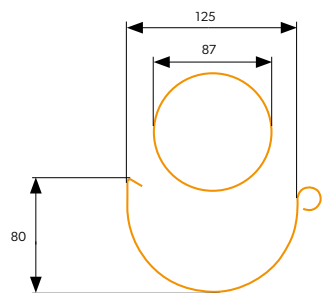


# INGURI GUTTER SYSTEM ORDER FORM

System:

125/87

150/100



Colour:

RAL 3011



RAL 7024



RAL 8004



RAL 8017



RAL 9005

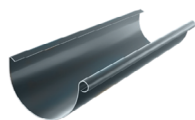


ALUZINC



Printing technology does not allow for faithful colour rendition. Therefore, the colours shown are approximate and may differ from actual colours.

Gutter



3m, quantity:

4m, quantity:

Drain pipe



1m, quantity:

3m, quantity:

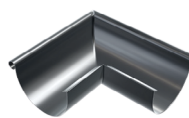
Inner corner



90°, quantity:

135°, quantity:

Outer corner



90°, quantity:

135°, quantity:

Substring



quantity:

Revision



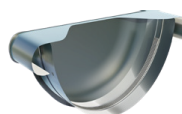
quantity:

Gutter fastener clamp + stabilizer



quantity:

Gutter end cap



quantity:

BP2 sp. z o. o.  
ul. Marii Konopnickiej 29  
30-302 Kraków

NIP: 6762431701, Regon: 121387608  
KRS: 0000369912, BDO: 00027817,  
Kapitał zakładowy: 96 838 900,00 zł

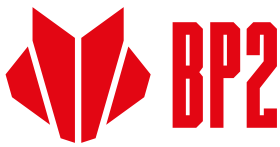
Zakłady produkcyjne:  
Production plants:

Grojec, ul. Grojecka 39  
32-566 Altwernia k/Krakowa

ul. Budowlanych 10  
41-303 Dąbrowa Górnicza

Bank Handlowy w Warszawie S.A.  
PL95 1030 1508 0000 0008 0325 4001 PLN  
PL76 1030 1508 0000 0008 0325 4052 EUR/SWIFT: CITIPLPX

PKO BANK POLSKI S.A.  
PL 59 1020 2313 0000 3402 0627 1235 PLN  
PL 76 1020 2313 0000 3902 0627 1557 EUR/SWIFT: BPKOPLPW



Tee pipe



quantity:

Cover corner



quantity:

Top rafter hook



160mm, quantity:

210mm, quantity:

300mm, quantity:

Bolted dowel clamp



quantity:

Drain pipe clamp half



quantity:

Spray lubricant



quantity:

Drain pipe elbow



quantity:

Drainage gutter

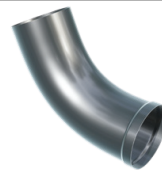


125/87, quantity:

125/100, quantity:

150/100, quantity:

Spout



quantity:

Sleeve



quantity:

Face hook



quantity:

Dowels for bolted clamp

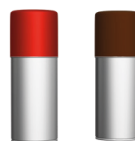


160mm, quantity:

250mm, quantity:

300mm, quantity:

Paint



quantity:

BP2 sp. z o. o.  
ul. Marii Konopnickiej 29  
30-302 Kraków

NIP: 6762431701, Regon: 121387608  
KRS: 0000369912, BDO: 00027817,  
Kapitał zakładowy: 96 838 900,00 zł

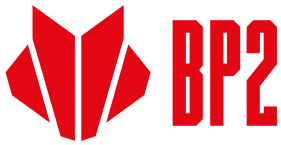
Zakłady produkcyjne:  
Production plants:

Grojec, ul. Grojecka 39  
32-566 Alwernia k/Krakowa

ul. Budowlanych 10  
41-303 Dąbrowa Górnicza

Bank Handlowy w Warszawie S.A.  
PL95 1030 1508 0000 0008 0325 4001 PLN  
PL76 1030 1508 0000 0008 0325 4052 EUR/SWIFT: CITIPLPX

PKO BANK POLSKI S.A.  
PL 59 1020 2313 0000 3402 0627 1235 PLN  
PL 76 1020 2313 0000 3902 0627 1557 EUR/SWIFT: BPKOPLPW



---

Notes

---

Purchased goods are not returnable

Stamp

The Orderer has been informed that they must arrange for the unloading of the delivered products on their own. The Orderer also declares that they are familiar with and accept the general terms of sale (GTS), the conditions of warranty, transport and storage, and the content and guidelines of the installation instructions. Claims for transport damage not reported to the driver when unloading and not confirmed by them will not be considered (concerns gutters and drain pipes). Damage to items sent by freight forwarding must be reported to the following email address: [logistyka@bp2.pl](mailto:logistyka@bp2.pl).

Legible signature

Contact phone

BP2 sp. z o. o.  
ul. Marii Konopnickiej 29  
30-302 Kraków

NIP: 6762431701, Regon: 121387608  
KRS: 0000369912, BDO: 00027817,  
Kapitał zakładowy: 96 838 900,00 zł

**Zakłady produkcyjne:**  
**Production plants:**

Grojec, ul. Grojecka 39  
32-566 Alwernia k/Krakowa

ul. Budowlanych 10  
41-303 Dąbrowa Górnicza

Bank Handlowy w Warszawie S.A.  
PL95 1030 1508 0000 0008 0325 4001 PLN  
PL76 1030 1508 0000 0008 0325 4052 EUR/SWIFT: CITIPLPX

PKO BANK POLSKI S.A.  
PL 59 1020 2313 0000 3402 0627 1235 PLN  
PL 76 1020 2313 0000 3902 0627 1557 EUR/SWIFT: BPKOPLPW