



# PRICE LIST INGURI

valid from: 13-10-2023

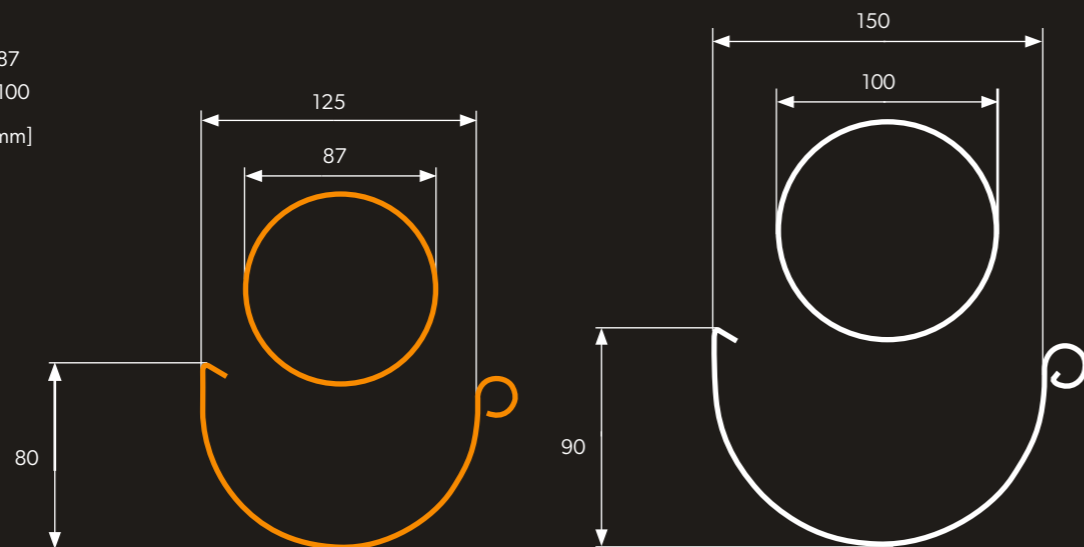


THE POWER OF ROOFS





— INGURI 125/87  
— INGURI 150/100  
 dimensions [mm]



## FEEDSTOCK

### INGURI

INGURI gutters are manufactured from hot-dip galvanised sheet metal which, after chemical cleaning and passivation, is coated with a multi-layer anticorrosive and decorative organic coating. The thickness of the sheet is 0.6 mm while the organic layer is a material with very high resistance to weathering, mechanical damage, and the effects of solar radiation (UV) responsible for the loss of colour.

Paint coating thickness	Zinc coating thickness	Corrosion resistance	UV resistance	Warranty period (years)
50 µm	275 g/m <sup>2</sup>	C4	RUV3	30

### Aluzinc INGURI [AZ 185]

It is a steel sheet coated on both sides with an aluminium-zinc alloy in a process similar to hot-dip galvanizing. Thanks to this, it meets the strictest requirements for sheet resistance to atmospheric corrosion and corrosion in humid environments. It also has a protective Easyfilm polymer coating.

Coating thickness	Corrosion resistance	UV resistance	Warranty period (years)
185 g/m <sup>2</sup>	C3	n/a	15

## COLOURS



\* The white colour is only available for the INGURI 150/100 system.

! Printing technology does not allow for faithful colour rendition, so the colours shown are approximate and may differ from actual colours.

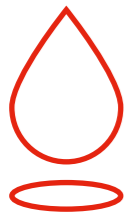
! Detailed warranty conditions are specified in the warranty certificate.

# ADVANTAGES OF INGURI GUTTER SYSTEMS



## PROTECTION OF YOUR HOME

Using the right gutter system allows water to be efficiently drained from the roofing material which is crucial to its durability and functionality. It also protects the facade of the building from the effects caused by moisture. Gutter system INGURI 125/87 and 150/100 is a complete system produced from the highest quality organic coated steel or metallic coating Aluzinc. This system will effectively protect your home.



## RELIABLE TIGHTNESS

The joint with the stabilizer is equipped with a gasket that ensures the tightness of the system even under extreme weather conditions. Complementary to the gutter is a bottom, equipped with gaskets, with the possibility of riveting and screwing.



## EXCELLENT WATER DRAINAGE

INGURI gutters are much deeper than competitive products, this design prevents the phenomenon of overflow of water outside the gutter, which occurs during heavy rainfall. Ergonomic gutters protect the facade against stains.



## HIGH RESISTANCE TO WEATHER CONDITIONS

Used for the manufacture of INGURI gutter systems sheet metal with a thickness of 0.6 mm is coated with an organic layer. The coating has a very high resistance to atmospheric factors and mechanical damage and influence of sun rays (UV) responsible for loss of color. INGURI systems are also produced from Aluzinc 185 sheets with an additional Easyfilm polymer coating on both sides.



## PEACE OF MIND FOR YEARS

INGURI system is covered by 30-years manufacturer warranty. Such a long warranty period is ensured by high quality of the input material and many years of experience of the manufacturer. By using materials with the highest technical parameters, we give our customers a product that provides peace of mind for years.



## SIMPLE INSTALLATION

INGURI system consists of perfectly matching elements thanks to which installation is easy and quick.



## INGURI ON THE MOVE

The long pieces are protected with a special foil sleeve so that the delivered material remains flawless. The gutters are transported in a specially equipped vehicle with balcony systems to warranty the safety of the material.



## WIDE RANGE OF COLORS

The offer of a complete gutter system INGURI includes a wide range of colors that allow the gutter system to put the finishing touches to the roof. The right choice of gutter system guarantees a flawless effect of the investment and harmony.

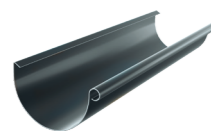


## COMPLETE OFFER

When you buy a complete roofing with gutter system INGURI, you get a longer warranty.

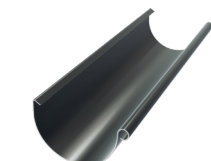
- \* 30 years ULTIMAT [UTK] coating.
- \* 40 years HERCULIT [HC] coating.

**Gutter 3 mb [1]**



system / material	net price	unit
125/87 / RAL	23,35 €	180
125/87 / AZ	€ 19,85	
150/100 / RAL	25,60 €	110
150/100 / AZ	€ 21,80	

**Gutter 4 mb [1]**



system / material	net price	unit
125/87 / RAL	31,10 €	180
125/87 / AZ	€ 26,45	
150/100 / RAL	34,20 €	110
150/100 / AZ	€ 29,10	

**Inner corner 90° [2]**



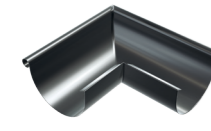
system / material	net price	unit
125/87 / RAL	21,45 €	20
125/87 / AZ	€ 18,25	
150/100 / RAL	21,90 €	12
150/100 / AZ	€ 18,65	

**Inner corner 135° [2]**



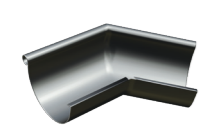
system / material	net price	unit
125/87 / RAL	21,90 €	12
125/87 / AZ	€ 21,90	
150/100 / RAL	83,95 €	5
150/100 / AZ	€ 83,95	

**Outer corner 90° [3]**



system / material	net price	unit
125/87 / RAL	21,45 €	20
125/87 / AZ	€ 18,25	
150/100 / RAL	21,90 €	12
150/100 / AZ	€ 18,65	

**Outer corner 135° [3]**



system / material	net price	unit
125/87 / RAL	21,90 €	12
125/87 / AZ	€ 21,90	
150/100 / RAL	83,95 €	5
150/100 / AZ	€ 83,95	

**Gutter fastener + stabilizer [4]**

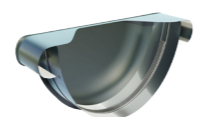


system / material	net price	unit
125/87 / RAL	6,40 €	80
125/87 / AZ	€ 5,45	
150/100 / RAL	7,15 €	60
150/100 / AZ	€ 6,10	



**Spout [5]**

system / material	net price	unit
125/87 / RAL	8,50 €	30
125/87 / AZ	€ 7,25	
150/100 / RAL	9,95 €	16
150/100 / AZ	€ 8,50	
125/100 / RAL	11,05 €	16
125/100 / AZ	€ 9,40	



**Gutter end cap [6]**

system / material	net price	unit
125/87 / RAL	3,85 €	50
125/87 / AZ	€ 3,30	
150/100 / RAL	4,45 €	35
150/100 / AZ	€ 3,80	



**Gutter support [7]**

system / material	net price	unit
125/87 / RAL	2,35 €	100
125/87 / AZ	€ 2,00	
150/100 / RAL	2,35 €	100
150/100 / AZ	€ 2,00	



**Cover corner [8]**

system / material	net price	unit
125/87 / RAL	8,15 €	25
125/87 / AZ	€ 7,40	
150/100 / RAL	8,15 €	25
150/100 / AZ	€ 6,95	



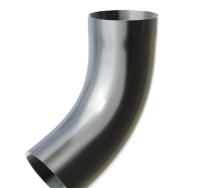
**Drain pipe 1 mb [9]**

system / material	net price	unit
125/87 / RAL	8,65 €	112
125/87 / AZ	€ 6,95	
150/100 / RAL	10,20 €	132
150/100 / AZ	€ 8,70	



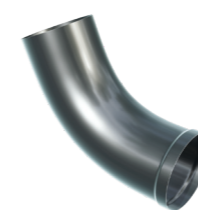
**Drain pipe 3 mb [9]**

system / material	net price	unit
125/87 / RAL	25,85 €	84
125/87 / AZ	€ 22,00	
150/100 / RAL	30,35 €	60
150/100 / AZ	€ 25,80	



**Drain pipe elbow ø87/63° [10]**

system / material	net price	unit
125/87 / RAL	8,65 €	24
125/87 / AZ	€ 7,40	
150/100 / RAL	10,20 €	18
150/100 / AZ	€ 8,70	



**Drain pipe elbow ø87/63° [11]**

system / material	net price	unit
125/87 / RAL	8,85 €	24
125/87 / AZ	€ 7,55	
150/100 / RAL	10,35 €	18
150/100 / AZ	€ 8,80	



**Tee pipe [12]**

system / material	net price	unit
125/87 / RAL	42,30 €	10
125/87 / AZ	€ 36,00	
150/100 / RAL	47,60 €	10
150/100 / AZ	€ 40,50	



**Cleanout [13]**

system / material	net price	unit
125/87 / RAL	51,80 €	16
125/87 / AZ	€ 51,80	
150/100 / RAL	65,90 €	14
150/100 / AZ	€ 65,90	



**Sleeve [14]**

system / material	net price	unit
125/87 / RAL	5,20 €	25
125/87 / AZ	€ 4,70	
150/100 / RAL	5,75 €	20
150/100 / AZ	€ 5,20	



**Screw clamp [15]**

system / material	net price	unit
125/87 / RAL	4,00 €	200
125/87 / AZ	€ 3,30	
150/100 / RAL	4,35 €	200
150/100 / AZ	€ 3,85	



**Dowel for screw clamp [16]**

size	net price	unit
160 mm / AZ	€ 4,45	200
250 mm / AZ	€ 1,15	
300 mm / AZ	€ 1,70	



**Drain pipe clamp half [17]**

system / material	net price	unit
125/87 / RAL	3,85 €	100
125/87 / AZ	€ 3,30	
150/100 / RAL	4,50 €	100
150/100 / AZ	€ 3,85	



**Top rafter hook L=160 mm [19]**

system / material	net price	unit
125/87 / RAL	4,00 €	40
125/87 / AZ	€ 3,05	
150/100 / RAL	5,25 €	50
150/100 / AZ	€ 3,05	



**Top rafter hook L=210 mm [19]**

system / material	net price	unit
125/87 / RAL	4,80 €	40
125/87 / AZ	€ 3,40	
150/100 / RAL	5,80 €	50
150/100 / AZ	€ 4,50	



**Top rafter hook L=300 mm [19]**

system / material	net price	unit
125/87 / RAL	5,50 €	50
125/87 / AZ	€ 4,10	
150/100 / RAL	6,50 €	50
150/100 / AZ	€ 4,95	



**Face hook [20]**

system / material	net price	unit
125/87 / RAL	3,35 €	36
125/87 / AZ	€ 4,70	
150/100 / RAL	4,45 €	25
150/100 / AZ	€ 5,55	



**Lubricant spray**

net price	unit
13,20 €	12



**Paint 20 ml**

net price	unit
6,85 €	12



**Universal settling tank „BUT“ [21]**

net price	unit
10,65 €	4



**Flexible elbow „BUT“ [22]**

net price	unit
5,35 €	10



**Basket for the drain [23]**

net price	unit
3,40 €	1

**Clamp holder for sandwich panel [24]**

net price	unit
3,05 €	1



Modular roofing tiles  
**MODULAR SERIES**



Compact roofing tiles  
**COMPACT SERIES**



Steel roofing tiles  
**CLASSIC SERIES**



Retro roof tiles  
**RETRO SERIES**



Roof panels  
**PANEL SERIES**



INTEGRATED  
**PV PANELS**



Steel roof gutter system  
**INGURI**



**TRAPEZOIDAL**  
SHEETS



**FLAT METAL**  
SHEETS



**FLASHINGS**



**ACCESORIES**



**Roof Sandwich**  
PANELS



**Wall Sandwich**  
PANELS



Facade cladding  
**SKRIN, LINEA, SINUS**



Wall cassette &  
**PROSYSTEM**  
THERM



Uncoiling and slitting  
**SERVICES**



Flat sheets and cutting  
**SERVICES**



**PERFORATION**  
of sheets

