



ZIPP roof panels

New in the offer



THE POWER OF ROOFS



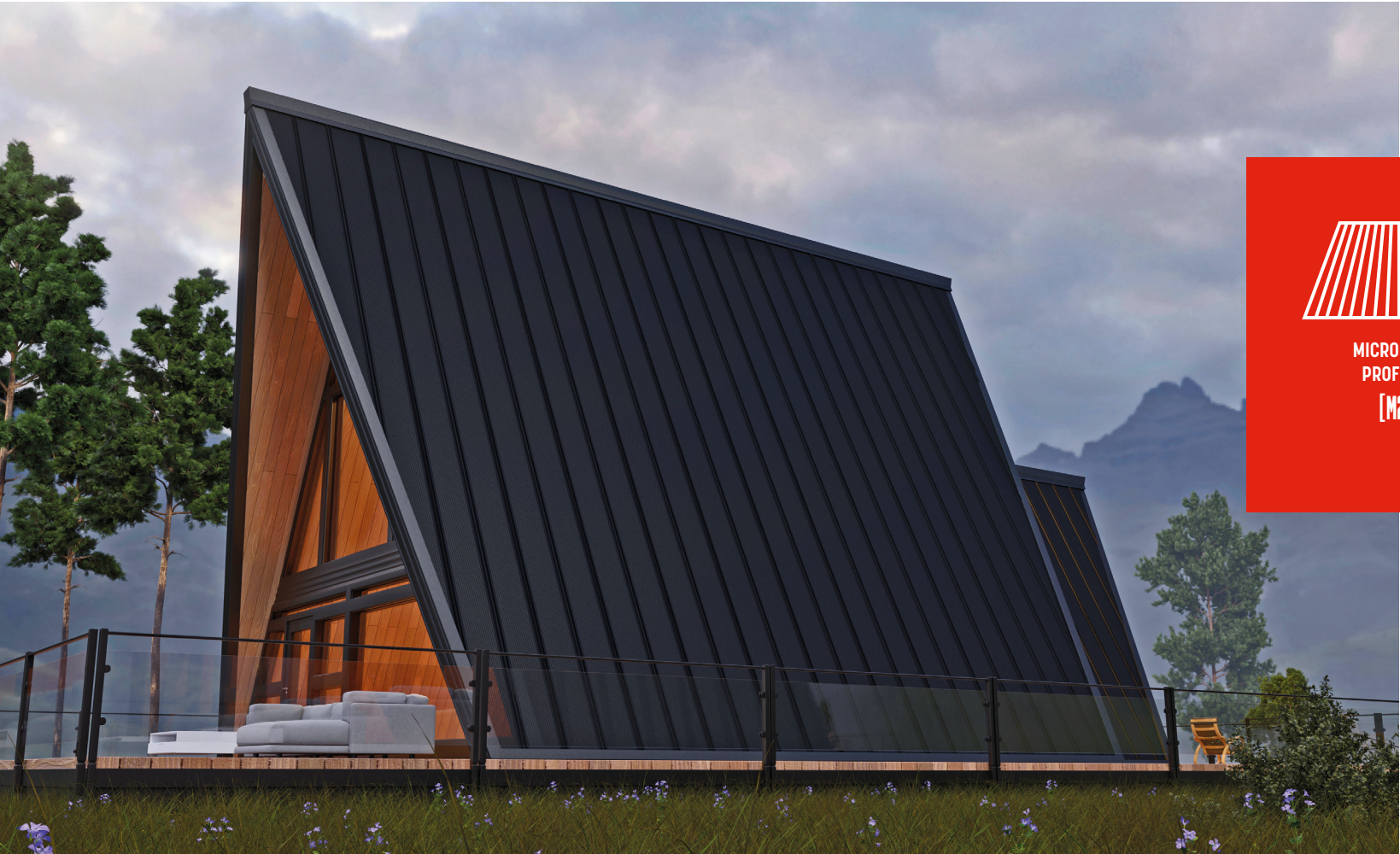


ZIPP roof panels

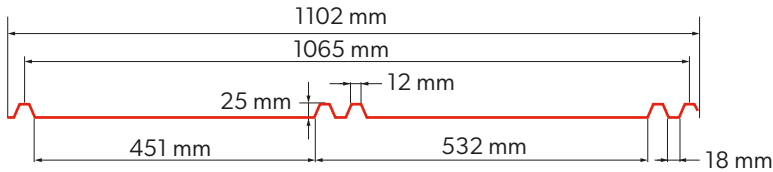
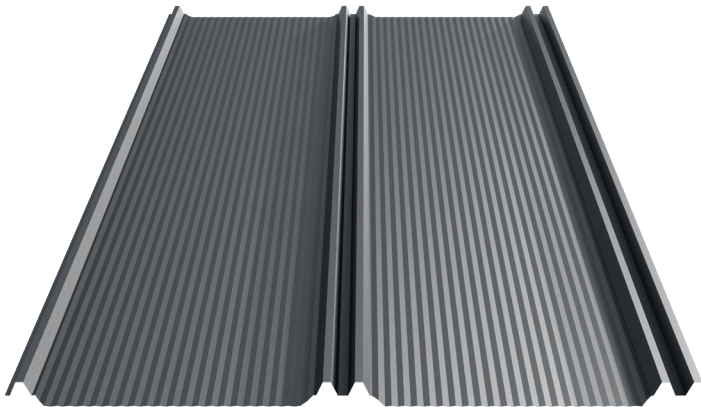
The ZIPP roof panel is another new product in the BP2.eu product range which has numerous features. However, quick and easy installation is its most unique feature.

Its design resembles classic roof panels, but the wide profile enables exceptionally wide roofing, which significantly shortens roof installation time compared to most roof panels available on the market.

The whole is completed with a wide range of colours, availability of numerous coating types, and a long warranty period up to 40 years for selected coatings.

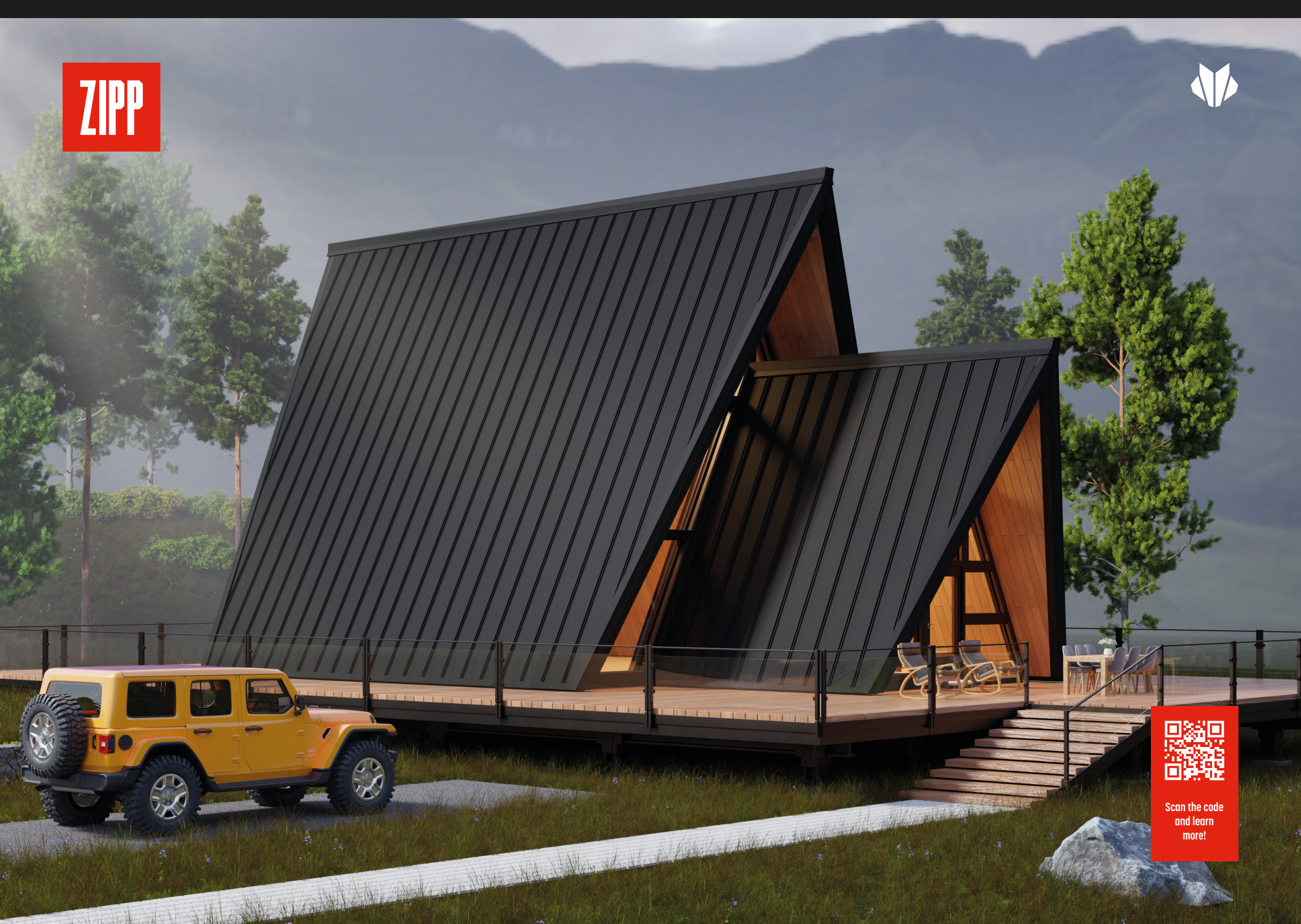


Technical information



MICRO RIB 20
PROFILING
[M20]

Technical parameters [mm]	
Profile height	25
Total width	1102
Effective width	1065
Sheet metal thickness	0,5-0,7
Sheet length	min. 1000 max. 8 000

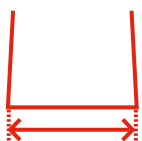


Scan the code
and learn
more!



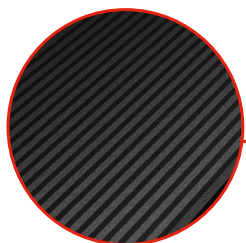
Product advantages

ZIPP also features numerous visual advantages. Namely, roof aesthetics is improved by the double embossing imitating a snap-in notch, minimizing screw visibility. Also, the BEND LOCK enables installing the eaves section without using screws. Finally, the aesthetic MICRO RIB longitudinal embossing minimizes the panel undulation effect.



EFFICIENT WIDE PROFILE

The double width, compared to standard roof panels, enables roof covering costs optimization.



MICRO RIB PROFILING

The double width, compared to standard roof panels, enables roof covering costs optimization.



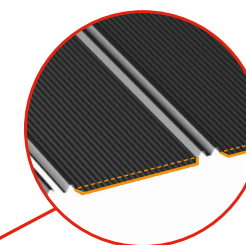
WIDE COLOUR SECTION

ZIPP panels are available in a wide range of coatings and colours. It enables perfect tailoring to the needs of a specific building.



QUICK INSTALLATION

The shape and technologies used in a ZIPP panel ensure easy and quick installation on the roof.



BEND LOCK

A special fold of the panel by the eaves sections conceals and protects the cut edge and eliminates the need to use screws.



BLACHPROFIL 2® Sp. z o. o.

ul. Nadwiślańska 11/139
30-527 Kraków
NIP: 6762431701

+48 12 415 55 51
centrala@bp2.eu

bp2.eu

Zakłady produkcyjne:
Production plants:

Grojec, ul. Grojecka 39
32-566 Alwernia k/Krakowa

ul. Budowlanych 10
41-303 Dąbrowa Górnicza



facebook.com/blachprofil2



instagram.com/bp2_eu



linkedin.com/company/blachprofil-2



youtube.com/c/BLACHPROFIL2eu