

## FIT MODULAR ROOF PANEL

is the newest product in the BP2.eu brand offer. Although it uses modern solutions, it is a nod to history. Its appearance resembles the classic roofs from many years ago in which the sheets, like the FIT panels, were connected vertically and alternately, thus giving a unique visual effect

In addition, the latch lock technology allows for a visual effect as in the case of a traditionally folded seam.



**The modularity of the panel has many advantages - it significantly speeds up the assembly, enables easier transport, and the proprietary connection systems facilitate the entire installation process.**

**An additional advantage is the visual effect that refers to traditional roofing.**

03/2022/EN



**BLACHPROFIL 2®**

**BLACHPROFIL 2® Sp. z o. o.**

ul. Nadwiślańska 11/139  
30-527 Kraków  
NIP: 6762431701  
+48 12 415 55 51  
centrala@bp2.eu  
bp2.eu

**Zakłady produkcyjne:**  
Production plants:

Grojec, ul. Grojecka 39  
32-566 Alwernia near Kraków  
ul. Budowlanych 10  
41-303 Dąbrowa Górnicza



[facebook.com/blachprofil2](https://facebook.com/blachprofil2)



[instagram.com/bp2\\_eu](https://instagram.com/bp2_eu)



[linkedin.com/company/blachprofil-2](https://linkedin.com/company/blachprofil-2)



[youtube.com/c/BLACHPROFIL2eu](https://youtube.com/c/BLACHPROFIL2eu)

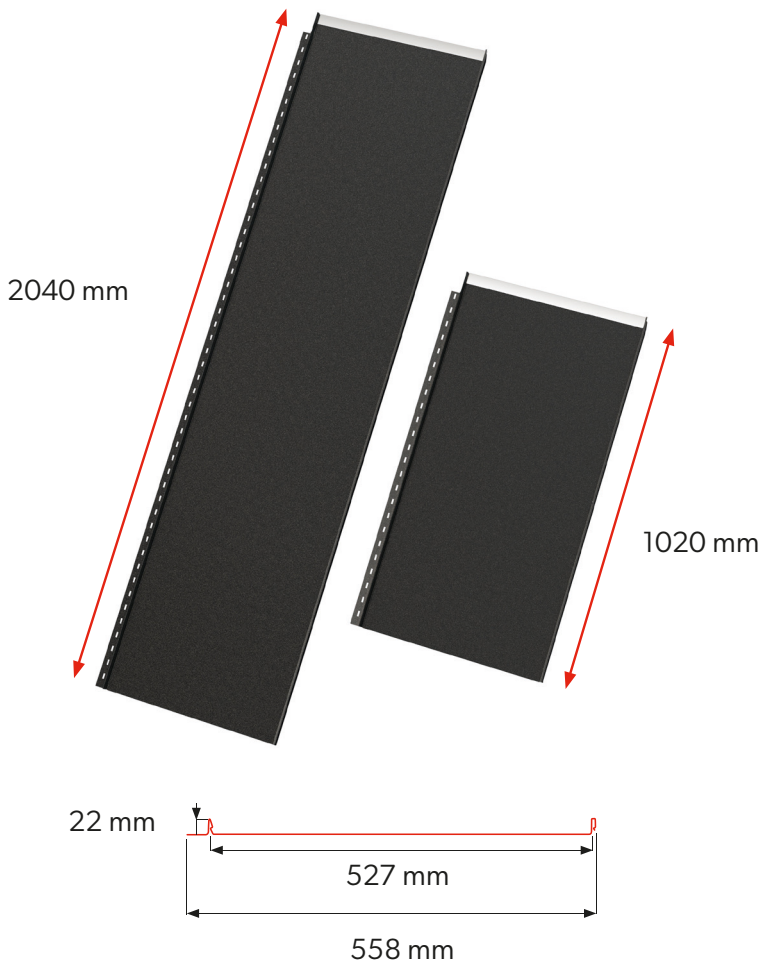


THE POWER OF ROOFS



# FIT ROOF AND FACADE PANEL

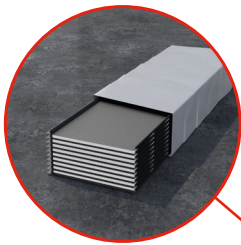
The product is available in two standard lengths:  
**1020 mm and 2040 mm**



### TECHNICAL DATA [mm]

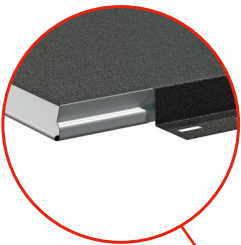
NAMING	FIT S	FIT L
SEAM HEIGHT	22	22
EFFECTIVE WIDTH	527	527
TOTAL WIDTH	558	558
SHEET THICKNESS	0,5	0,5
SHEET LENGTH	1020	2040
EFFECTIVE SHEET LENGTH	980	2010
TAB LENGTH WHEN SPLITTING A SHEET	30	30

www.bp2.eu



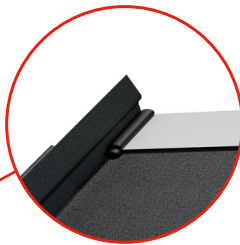
### MODULARITY

The panel is available in two standard lengths:  
1020 mm and 2040 mm, which allows quick and easy installation at low associated cost.  
  
The ergonomic method of packaging additionally facilitates transport and storage.



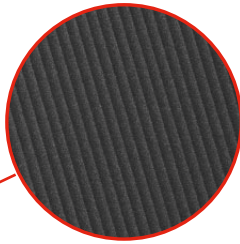
### EASY LINK

Original solution thanks to which the sheets fit together like never before.



### SEAL PROTECT

At the production stage, a special sealant is pressed into the fold of the sheet. It is distinguished by high flexibility and resistance to changing weather conditions.



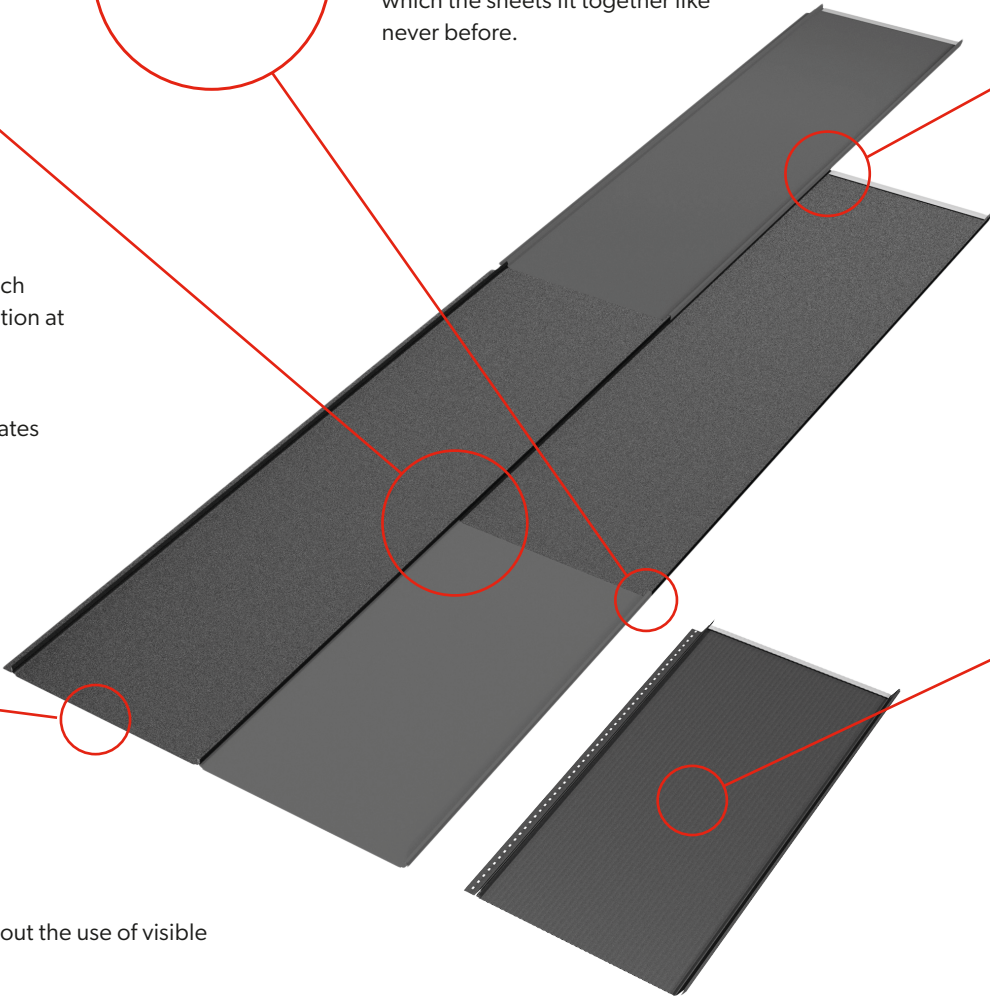
### PROFILING MICRO RIB

Smooth surface or equipped with MICRO RIB longitudinal profiling on the entire surface of the panel, which minimizes the potential effect of waviness .



### BEND LOCK

It enables joining sheets without the use of visible screws.



Available in two coatings: **ULTIMAT [UTK]** and **HERCULIT [HC]**, which guarantee repeatability of colour and structure.

#### HERCULIT [HC]



#### ULTIMAT [UTK]



Guarantee of colour repeatability

## GUARANTEE



**30 years**  
for panels in **ULTIMAT [UTK]** coating



**55 years**  
for panels in the **HERCULIT [HC]** coating

## PERFECT IN DETAILS

Flawless precision of workmanship and a timeless look.



Scan the code and learn more about the product!