

Product catalogue

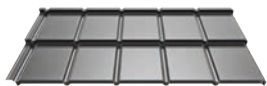
PANEL SERIES

THE POWER OF ROOFS

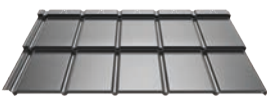


MODULAR SERIES

IZI^{ROOF}



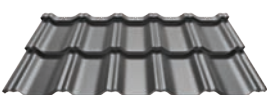
IZI^{LOOK}



ZET^{ROOF}

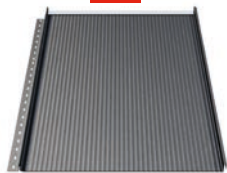


ZET^{LOOK}

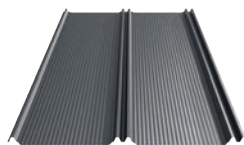


PANEL SERIES

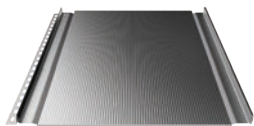
FIT



ZIPP



LAMBDA 2.0



COMPACT SERIES

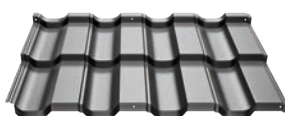
FINN 2.0



ALFA 2.0



HETA 2.0



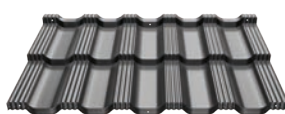
GAMMA 2.0



STIGMA 2.0



BAVARIA^{ROOF} 2.0



CLASSIC SERIES

FINN



ALFA



HETA



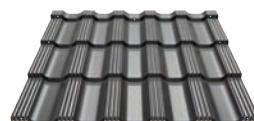
GAMMA



STIGMA

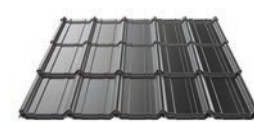


BAVARIA^{ROOF}



RETRO SERIES

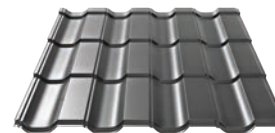
FINN^{RETRO}



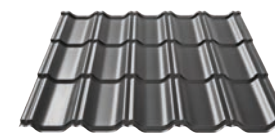
ALFA^{RETRO}



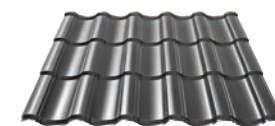
HETA^{RETRO}



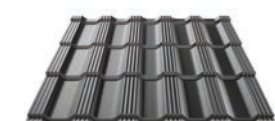
GAMMA^{RETRO}



STIGMA^{RETRO}

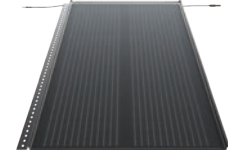


BAVARIA^{ROOF} RETRO



SOLROOF

FIT^{VOLT}



INGURI



SINUS



BP2 - THE POWER OF ROOFS
Scan the code and find out more.



1.

SOLROOF

06.What is SOLROOF?

7.

Technical information
and contact

- 82. Coating properties
- 83. Soundcontrol
- 84. Colours
- 86. Helpful links
- 88. Contact us

2.

FIT Modular Roof
Panel

- 11. Technical data
- 14. Product advantages
- 18. Colours and warranty

3.

ZIPP
Roof Panel

- 23. Technical data
- 26. Product advantages

4.

LAMBDA 2.0
Roof Panels

- 31. Technical data
- 46. Product advantages
- 50. Innovative production
line

5.

Steel gutter
system INGURI

- 54. Technical data
- 56. Description of
elements
- 60. Advantages of INGURI
gutter systems
- 64. Colours
- 65. Feedstock

6.

Flashing and
accessories

- 68. New flashings
- 70. Flashings
- 72. Accesories





FIT VOLT

POWERED BY
BP2

What is SOLROOF?

SOLROOF is an innovative system that was created in response to the growing demand for clean energy. It is the only complete photovoltaic system on the market that is fully integrated into the steel roofing. Proprietary solutions allow for unique aesthetics of the roof and the use of various forms and shapes, which is not possible to achieve in the case of a conventional photovoltaic installation. The combination of FIT sheet metal panels and integrated FIT VOLT photovoltaic panels creates a coherent, harmonious coverage surface.

The SOLROOF integrated photovoltaic roof represents new quality that, as the first on the market, offers architects unlimited design possibilities, roofers easy and quick installation and the investor a unique visual effect, efficiency and safety of use. We achieve this by using one product, one assembly, one warranty, and one service.

INTEGRATED PHOTOVOLTAIC ROOF



← Scan the code or find out more
at www.solroof.eu

THE POWER OF ROOFS





2.

FIT Modular Roof Panel

11. Technical data

14. Product advantages

18. Colours and warranty

FIT



FIT Modular Roof Panel

is the newest product in the BP2 brand offer. Although it uses modern solutions, it is a nod to history. Its appearance resembles the classic roofs from many years ago in which the sheets, like the FIT panels, were connected vertically and alternately, thus giving a unique visual effect

In addition, the latch lock technology allows for a visual effect as in the case of a traditionally folded seam.

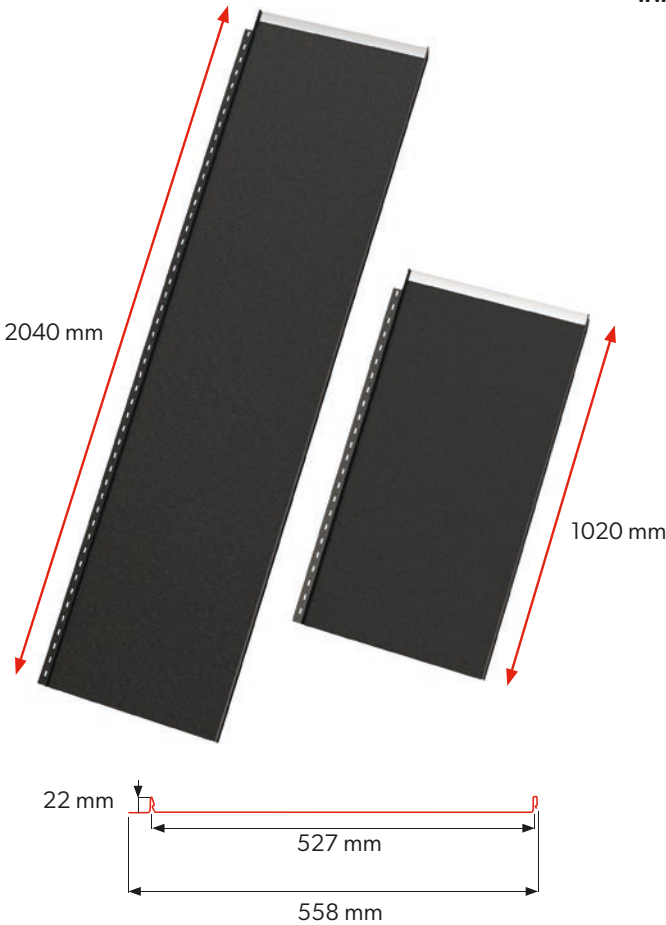


The modularity of the panel has many advantages - it significantly speeds up the assembly, enables easier transport, and the proprietary connection systems facilitate the entire installation process.

An additional advantage is the visual effect that refers to traditional roofing.



Technical data



The product is available in two standard lengths:
1020 mm i 2040 mm

Technical parameters [mm]		
Naming	FIT S	FIT L
Seam height	22	22
Total width	558	558
Effective width	527	527
Sheet thickness	0,5	0,5
Sheet lenght	1020	2040
Tab lenght when splitting a sheet	30	30
Roff angle	>9°	



You can find this product in our BP2 BIM library for architects and designers at www.bp2.eu/en/architects/



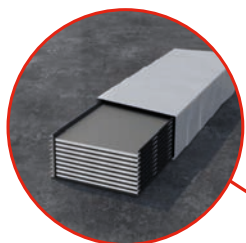


Scan code
and learn
more!



Product advantages

☆☆☆
**PERFECT
IN DETAILS**
Flawless precision of
workmanship and a timeless look.



MODULARITY

The panel is available in two standard lengths:

1020 mm and 2040 mm, which allows quick and easy installation at low associated cost.

The ergonomic method of packaging additionally facilitates transport and storage.



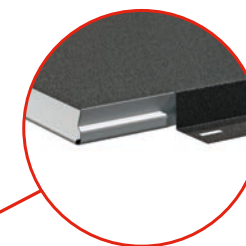
BEND LOCK

It enables joining sheets without the use of visible screws.



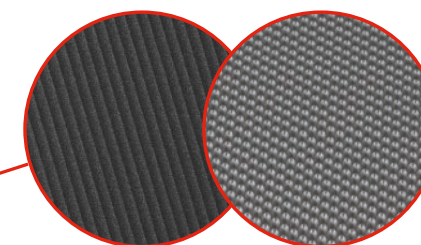
SEAL PROTECT

At the production stage, a special sealant is pressed into the fold of the sheet. It is distinguished by high flexibility and resistance to changing weather conditions.



EASY LINK

Original solution thanks to which the sheets fit together like never before.



PROFILING MICRO RIB AND MOLLET

Currently in our offer, FIT modular roof panels are available in three finishes: smooth, MICRO RIB [M] and MOLLET [O].

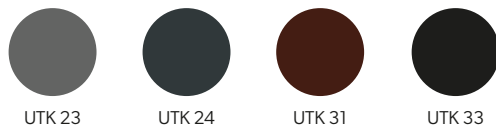


Scan code
and learn
more!



Colours and warranty

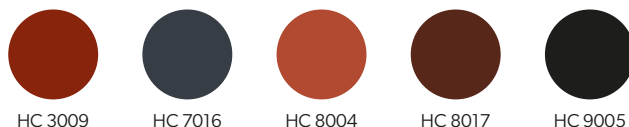
ULTIMAT [UTK]



A 35 µm thick coating with very high corrosion and UV resistance (RC4/RUV4). The ULTIMAT coating with its grained structure, inspired by nature, is free of chromium and heavy metals and is a green, recyclable product. Sheet metal coated with the ULTIMAT elastic coating can be profiled at extremely low temperatures.

Code	Coatings thickness	Corrosion resistance	UV resistance	Warranty period (years)
ULTIMAT [UTK]	35 µm	RC4	RUV4	30

HERCULIT [HC]

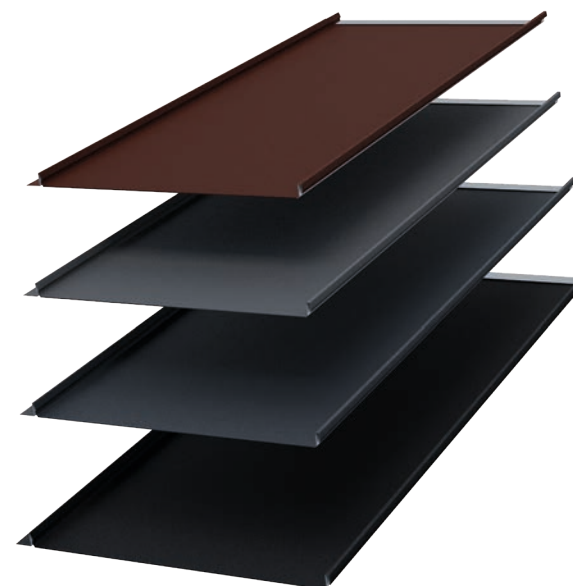


It is a coating developed in close cooperation with a leading manufacturer of varnishes for the best steel mills in Europe. Many years of studying existing coatings and monitoring customer needs, with particular emphasis on the needs of roofers, have allowed us to condense so many different advantages into one product. HERCULIT is a polyurethane cured polyester with a high resistance to mechanical damage and a thickness of 35 µm.

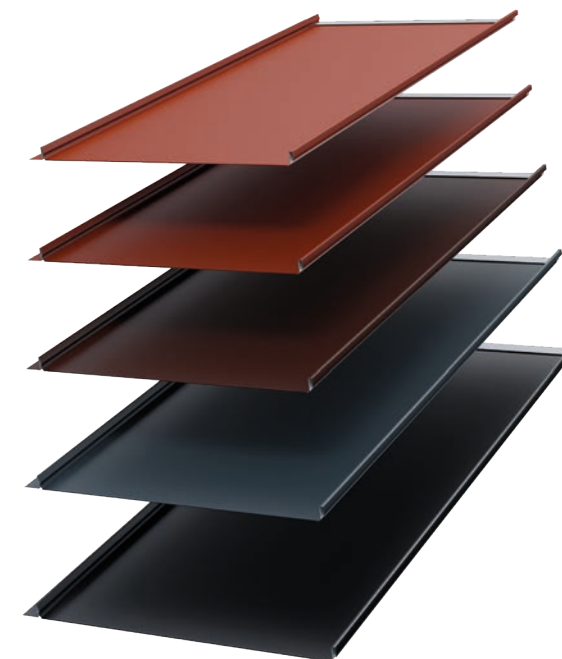
Code	Coatings thickness	Corrosion resistance	UV resistance	Warranty period (years)
HERCULIT [HC]	35 µm	RC4	RUV4	55



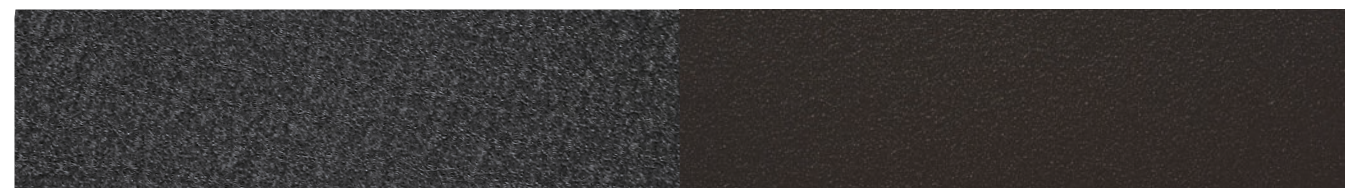
In 2022, after months of research, trials and many laboratory tests, it was possible to achieve a coating about 30% harder than the earlier version. HERCULIT [HC] is even more resistant to scratches, as well as to weathering or sunlight. At the same time, it has managed to maintain its flexibility, which is perfect for both installation and production of flashings. Thanks to all these parameters, it is an extremely durable product that will perform perfectly on the most demanding roof.



Warranty for panels in coating
ULTIMAT [UTK]



Warranty for panels in coating
HERCULIT [HC]



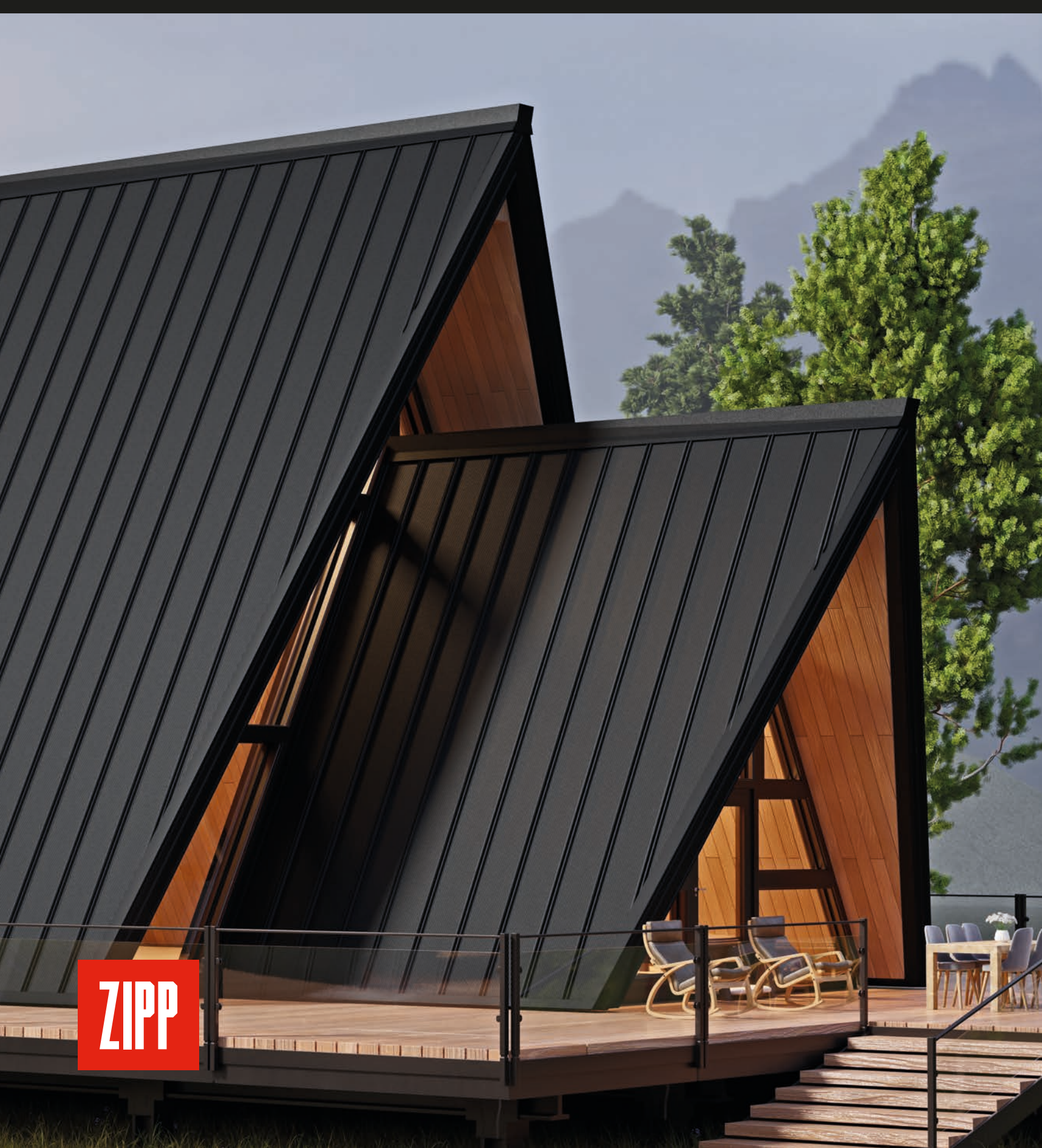
Available in two coatings: **ULTIMAT [UTK]** and **HERCULIT [HC]**, which guarantee repeatability of colour and structure.



Printing technology does not allow for faithful colour rendition, so the colours shown are approximate and may differ from actual colours.



Detailed warranty conditions are specified in the warranty card. The warranty becomes valid after registration on the website **www.warranty.bp2.eu**.



3.

ZIPP Roof Panel

23. Technical data

26. Product advantages



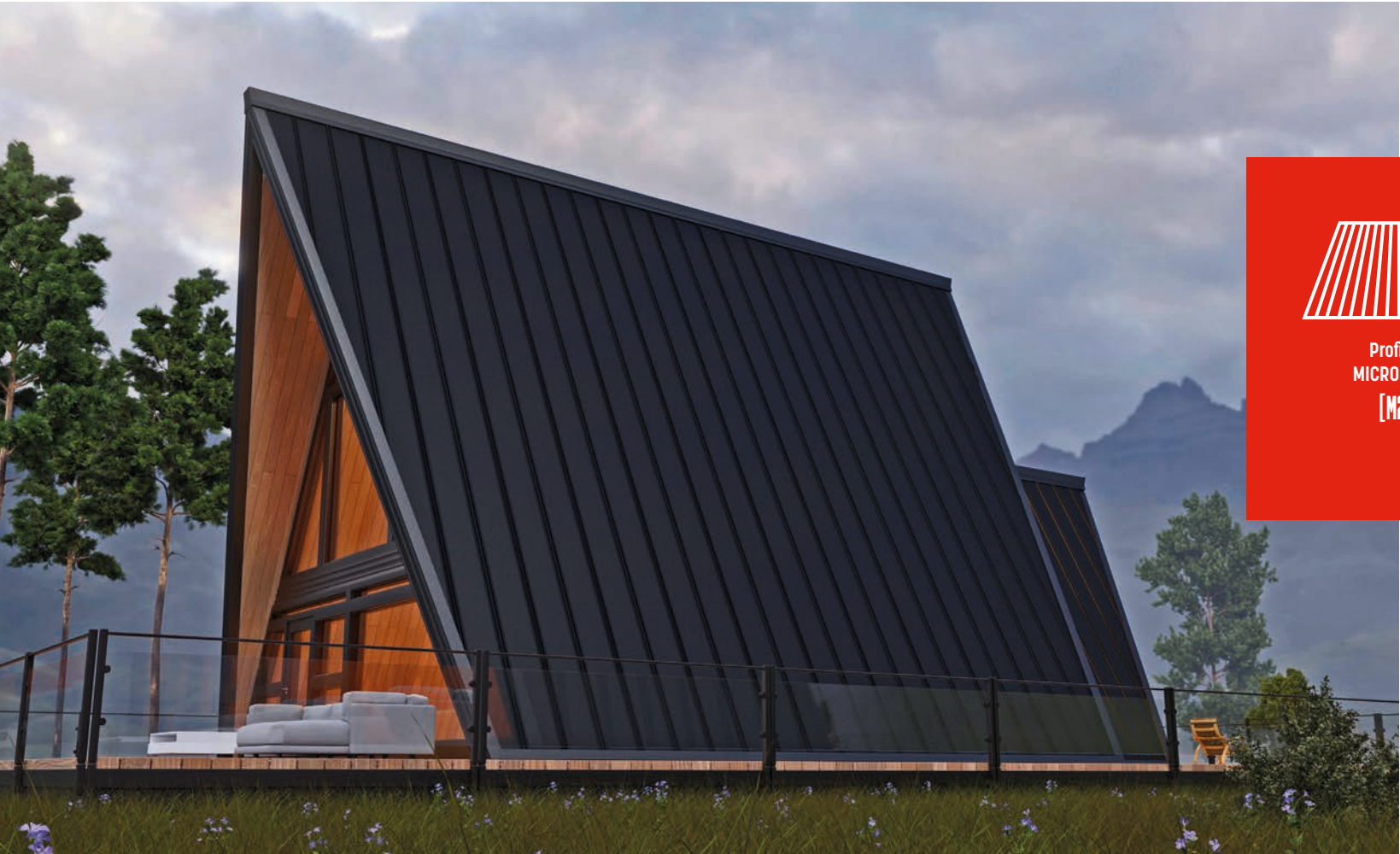
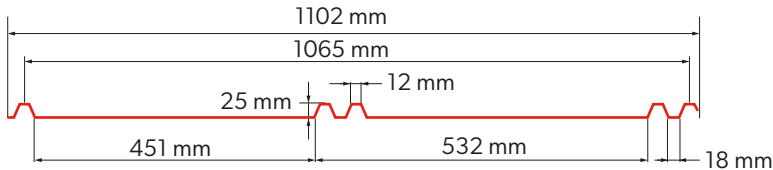
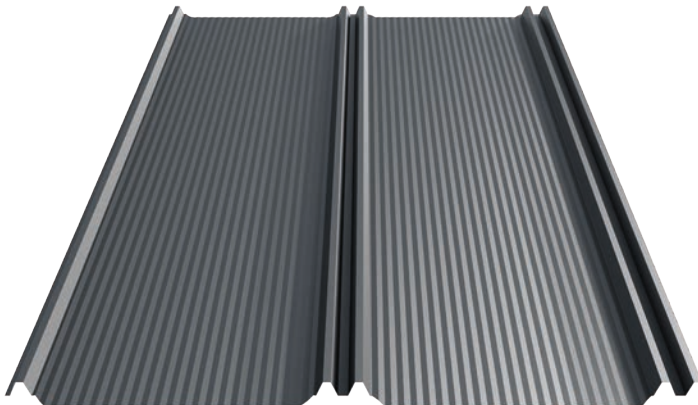
ZIPP Roof Panel

The ZIPP roof panel is another new product in the BP2 product range which has numerous features. However, quick and easy installation is its most unique feature.

Its design resembles classic roof panels, but the wide profile enables exceptionally wide roofing, which significantly shortens roof installation time compared to most roof panels available on the market.

The whole is completed with a wide range of colours, availability of numerous coating types, and a long warranty period up to 40 years for selected coatings.

Technical data



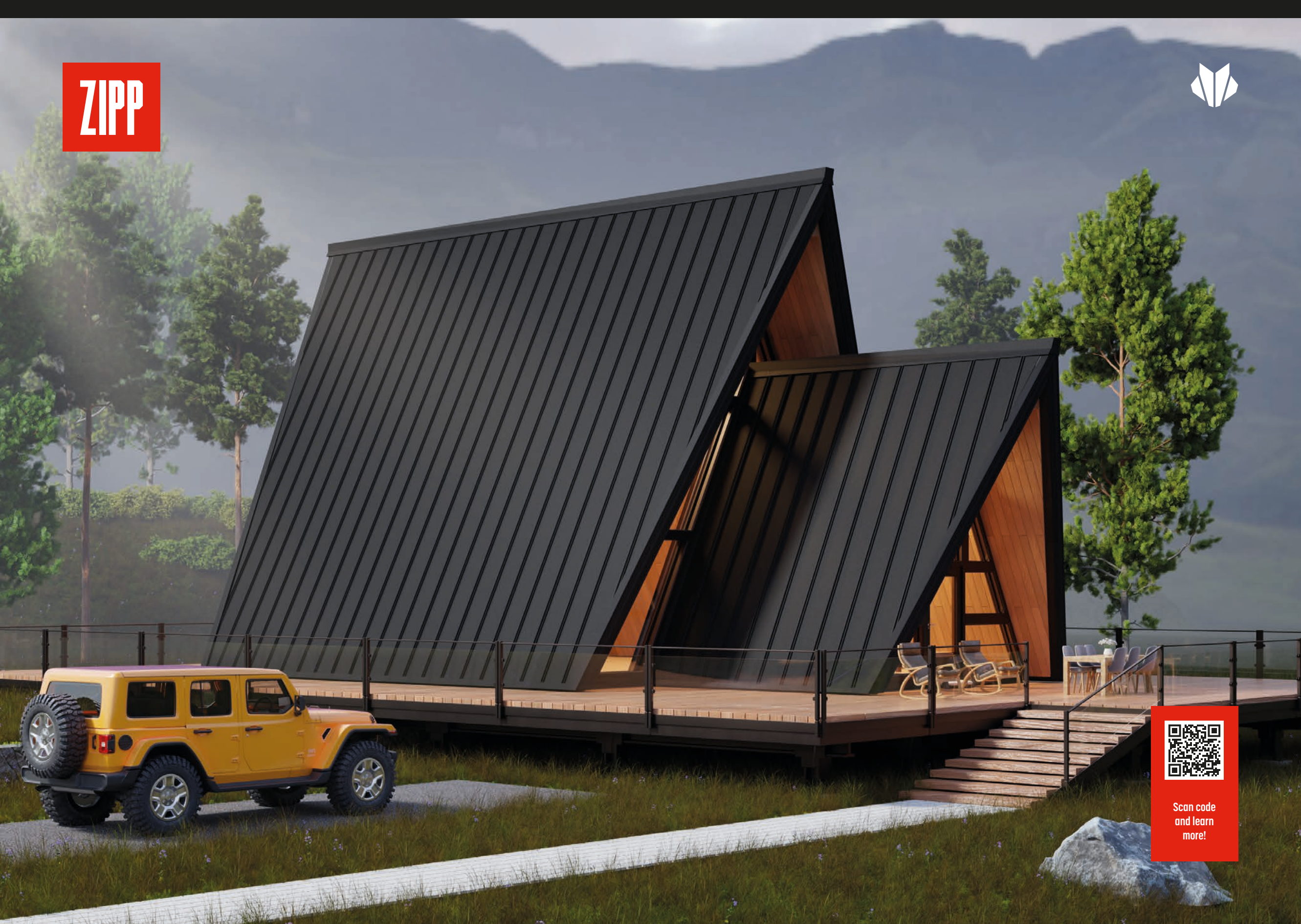
Profiling
MICRO RIB 20
[M20]

Technical parameters [mm]	
Profile height	25
Overall width	1102
Effective width	1065
Sheet thickness	0,5-0,7
Sheet length	min. 1000 max. 8 000
Roof angle	>9°



You can find this product in our BP2 BIM library for architects and designers at www.bp2.eu/en/architects/



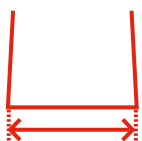


Scan code
and learn
more!



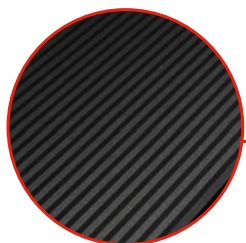
Product advantages

ZIPP also features numerous visual advantages. Namely, roof aesthetics is improved by the double embossing imitating a snap-in notch, minimizing screw visibility. Also, the BEND LOCK enables installing the eaves section without using screws. Finally, the aesthetic MICRO RIB longitudinal embossing minimizes the panel undulation effect.



EFFICIENT WIDE PROFILE

The double width, compared to standard roof panels, enables roof covering costs optimization.

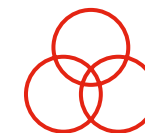


MICRO RIB PROFILING

The double width, compared to standard roof panels, enables roof covering costs optimization.



For more information on coatings and warranties, see page 82.
Detailed warranty conditions are specified in the warranty card.



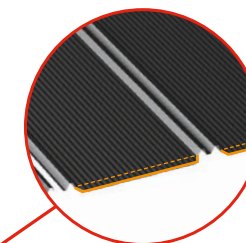
WIDE COLOUR SECTION

ZIPP panels are available in a wide range of coatings and colours. It enables perfect tailoring to the needs of a specific building.



QUICK INSTALLATION

The shape and technologies used in a ZIPP panel ensure easy and quick installation on the roof.



BEND LOCK

A special fold of the panel by the eaves sections conceals and protects the cut edge and eliminates the need to use screws.





LAMBDA 2.0

4.



LAMBDA 2.0 Roof Panels

31. Technical data

46. Product advantages

50. Innovative production line

LAMBDA 2.0

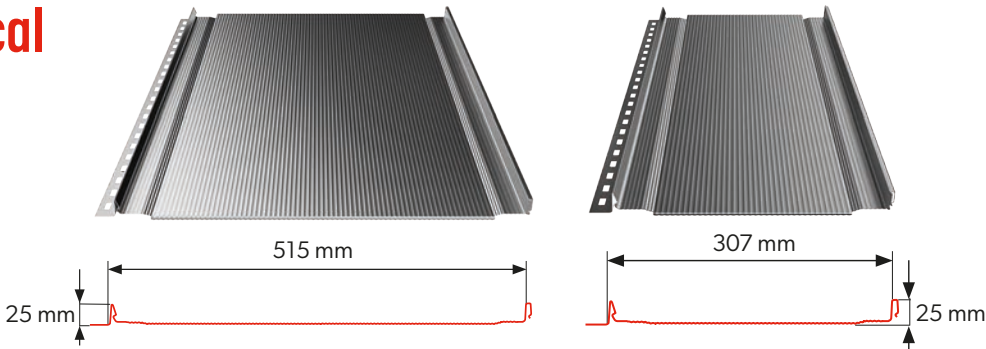
LAMBDA 2.0 Roof Panels

LAMBDA 2.0 is a lightweight and versatile roof panel. The construction of the panel offers more configuration possibilities and guarantees the state-of-the-art technological solutions while the perfect refinement is reflected in high aesthetics.

The MICRO RIB longitudinal profile on the entire panel surface minimises the possibility of wave effect while the COVER CAP and BEND LOCK finishes ensure the impeccable appearance of the roof. The roof panels are modernistic forms whose beauty lies in their minimalism and functionality. Therefore, they work well in both modern and traditional architecture.



Technical data



The product is available in two standard widths:
515 mm i 307 mm

Technical parameters [mm]

Naming	L.2.0.515	L.2.0.307
Seam height	25	25
Effective width	515	307
Overall width	~547	~339
Sheet thickness	0,5 - 0,7	0,5 - 0,7
Sheet length	min. 1000 max. 10 000	
Roof angle	>9°	



You can find this product in our BP2 BIM library for architects and designers at www.bp2.eu/en/architects/



Two panel widths and four profile types
The new offer provides more possibilities of configuration and the most recent technological solutions, and is perfectly refined with regard to aesthetics.



Profiling MICRO RIB
[M]



Profiling TYPU
[R]



Profiling TYPU
[T25]



POWIERZCHNIA BEZ
PROFILOWAŃ
[P]

LAMBDA 2.0

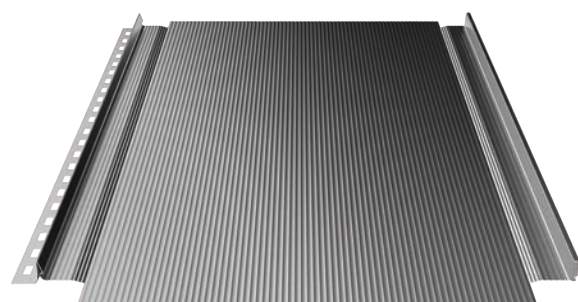


Scan code
and learn
more!



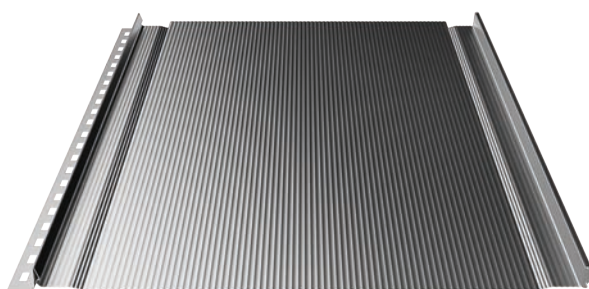
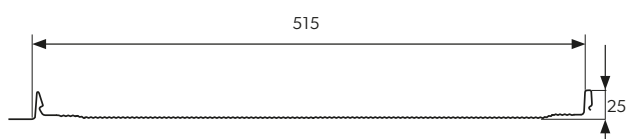
**Profiling
MICRO RIB
[M]**

The longitudinal micro-corrugation on the entire surface of the sheet minimises the possibility of ripple effect on the flat part of the panel.



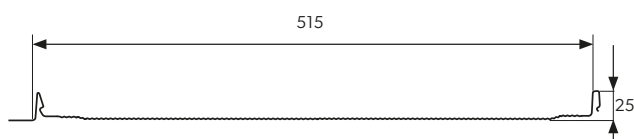
**Product code:
LW.2.0.515.M**

LAMBDA 2.0 roof panel
with MICRO RIB longitudinal
microcorrugation and cut-out for
folding.



**Product code:
LWZ.2.0.515.M**

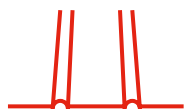
LAMBDA 2.0 roof panel
with MICRO RIB longitudinal
microcorrugation and BEND LOCK
fold.



For more information on coatings and warranties, see page 82.
Detailed warranty conditions are specified in the warranty card.

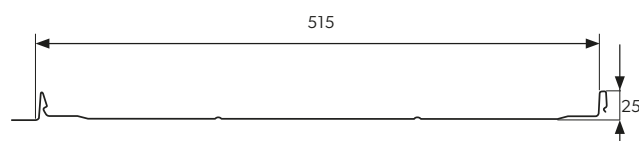
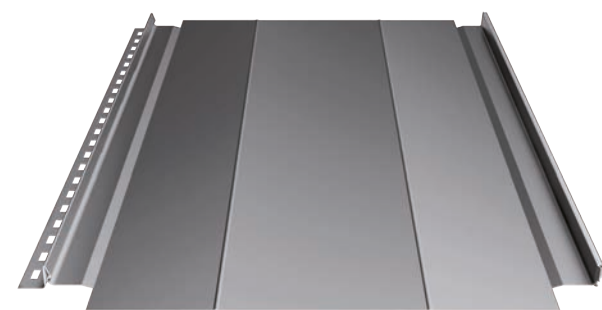


LAMBDA 2.0 Roof Panels



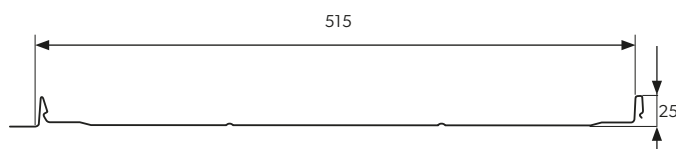
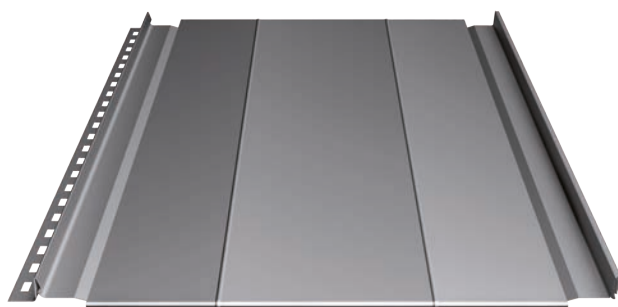
Profiling
TYPE
[R]

The surface finish of the panel is longitudinally profiled with symmetrical grooves.



Product code:
LW.2.0.515.R

LAMBDA 2.0 roof panel with double semicircular corrugation and cut-out for folding.



Product code:
LWZ.2.0.515.R

LAMBDA 2.0 roof panel with double semicircular corrugation and BEND LOCK fold.



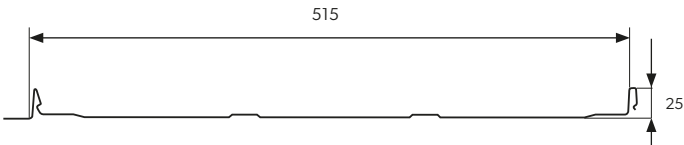
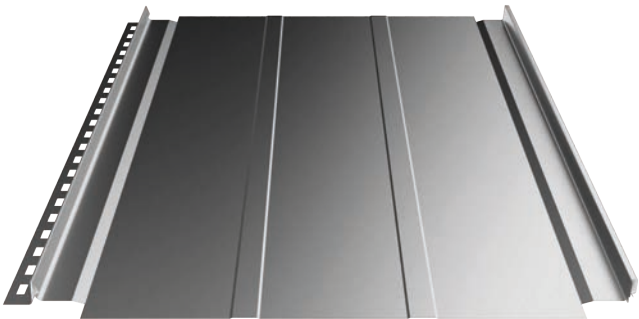
For more information on coatings and warranties, see page 82.
Detailed warranty conditions are specified in the warranty card.





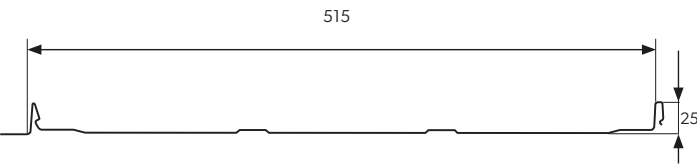
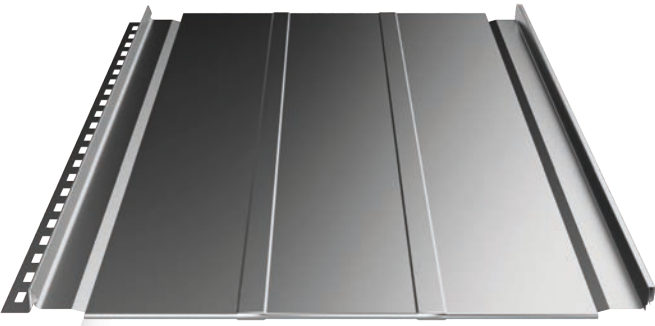
Profiling TYPE
[T25]

Finishing of the panel surface with longitudinal corrugation in the shape of a wide trapezoid.



Product code:
LW.2.0.515.T25

LAMBDA 2.0 roof panel with double trapezoidal corrugation and cut-out for folding.



Product code:
LWZ.2.0.515.T25

LAMBDA 2.0 roof panel with double trapezoidal corrugation and BEND LOCK fold.



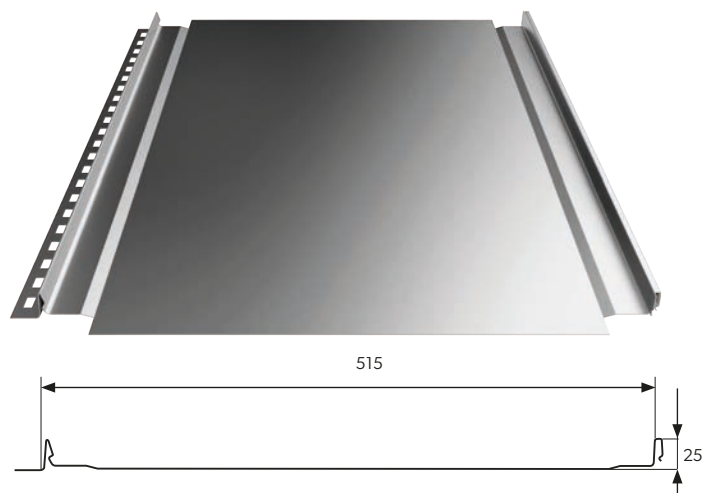
For more information on coatings and warranties, see page 82.
Detailed warranty conditions are specified in the warranty card.





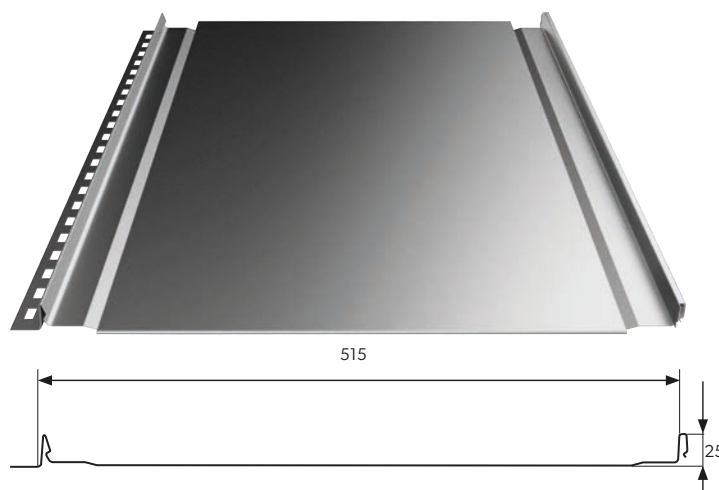
**SHEET WITHOUT
CORRUGATION
[P]**

Classic panel surface without any corrugation.



**Product code:
LW.2.0.515.P**

LAMBDA 2.0 roof panel with flat
surface and cut-out for folding.



**Product code:
LWZ.2.0.515.P**

LAMBDA 2.0 roof panel with flat
surface and BEND LOCK fold.



For more information on coatings and warranties, see page 82.
Detailed warranty conditions are specified in the warranty card.



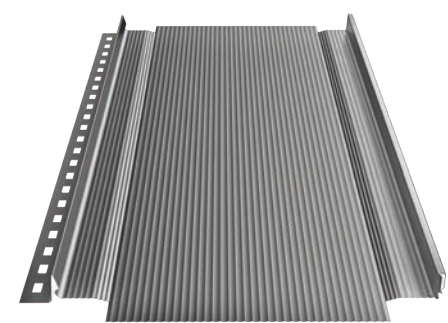
UWAGA! Ze względu na budowę paneli dachowych możliwe jest wystąpienie efektu tzw. „falowania” blachy na pokryciu. Jest to zjawisko naturalne dla tego typu produktów.



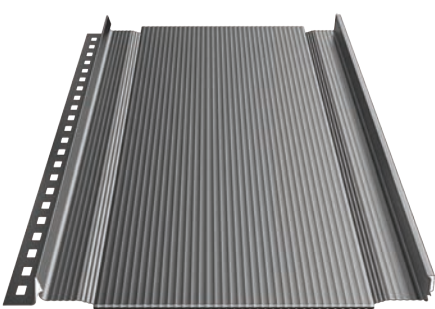
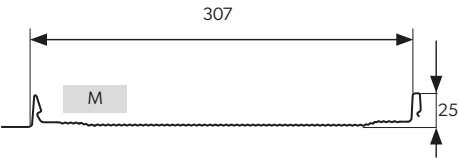
LAMBDA 2.0



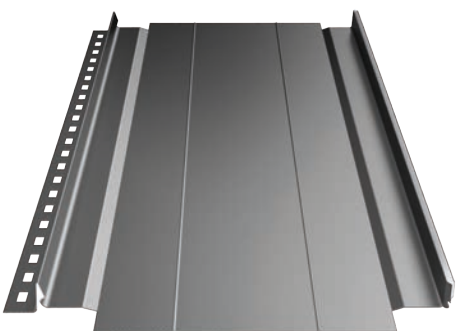
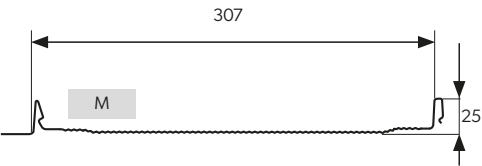
Scan code
and learn
more!



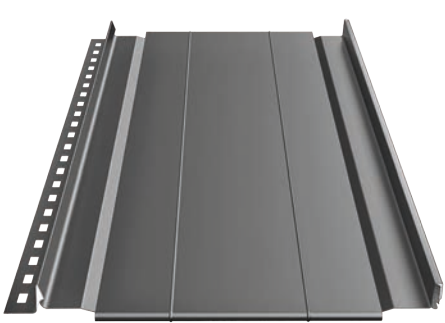
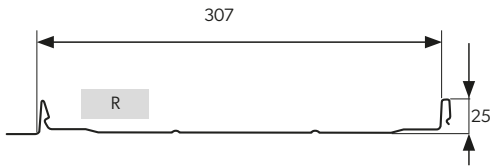
Product code: LW.2.0.307.M



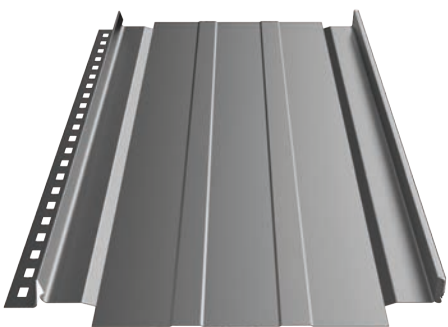
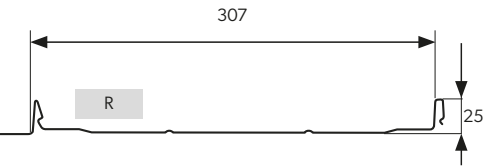
Product code: LWZ.2.0.307.M



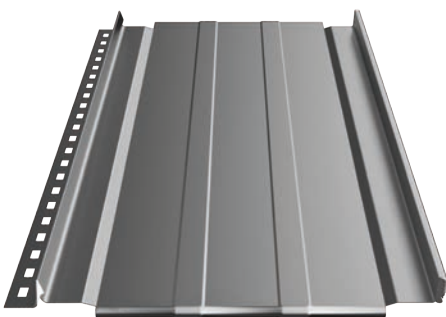
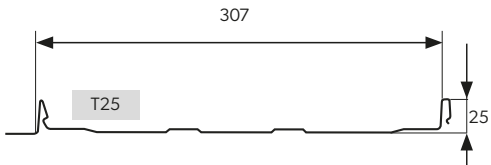
Product code: LW.2.0.307.R



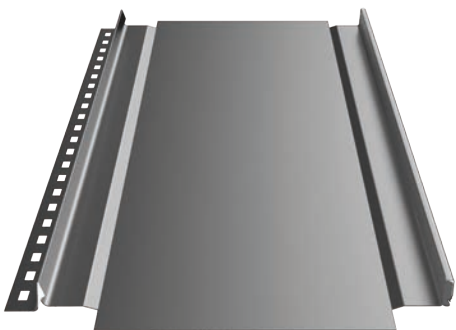
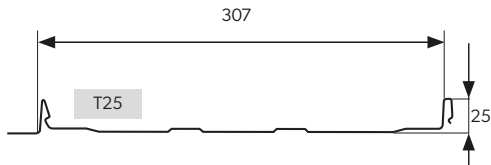
Product code: LWZ.2.0.307.R



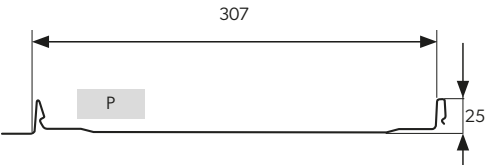
Product code: LW.2.0.307.T25



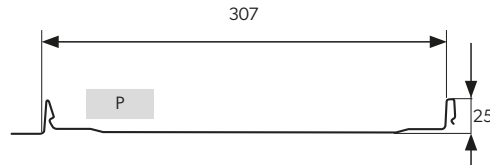
Product code: LWZ.2.0.307.T25



Product code: LW.2.0.307.P



Product code: LWZ.2.0.307.P



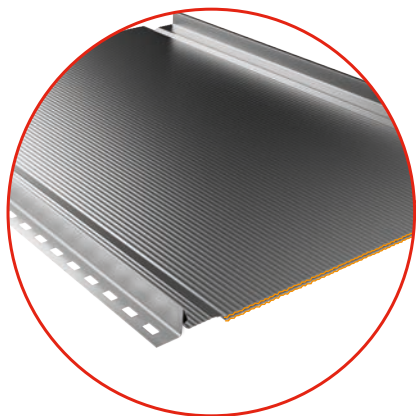
For more information on coatings and warranties, see page 82.
Detailed warranty conditions are specified in the warranty card.



Due to the construction of the roof panels, it is possible that the effect of so-called „waving“ of the metal sheet on the roofing occurs. This is a natural phenomenon for this type of product.

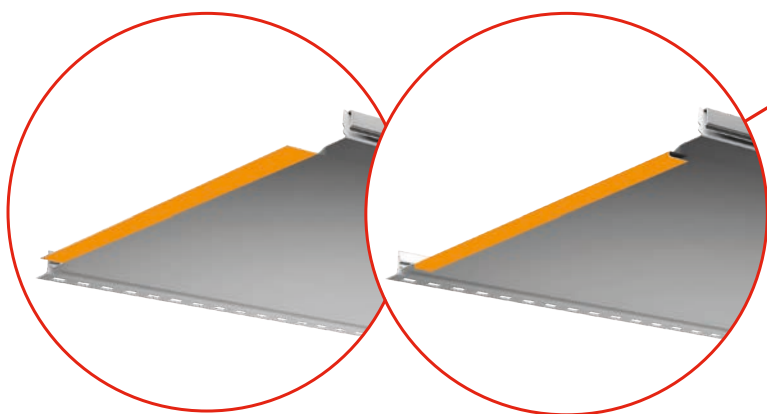
LAMBDA 2.0

Product advantages



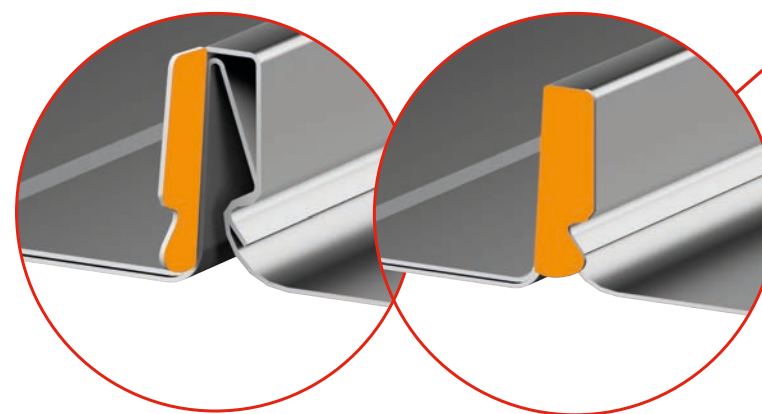
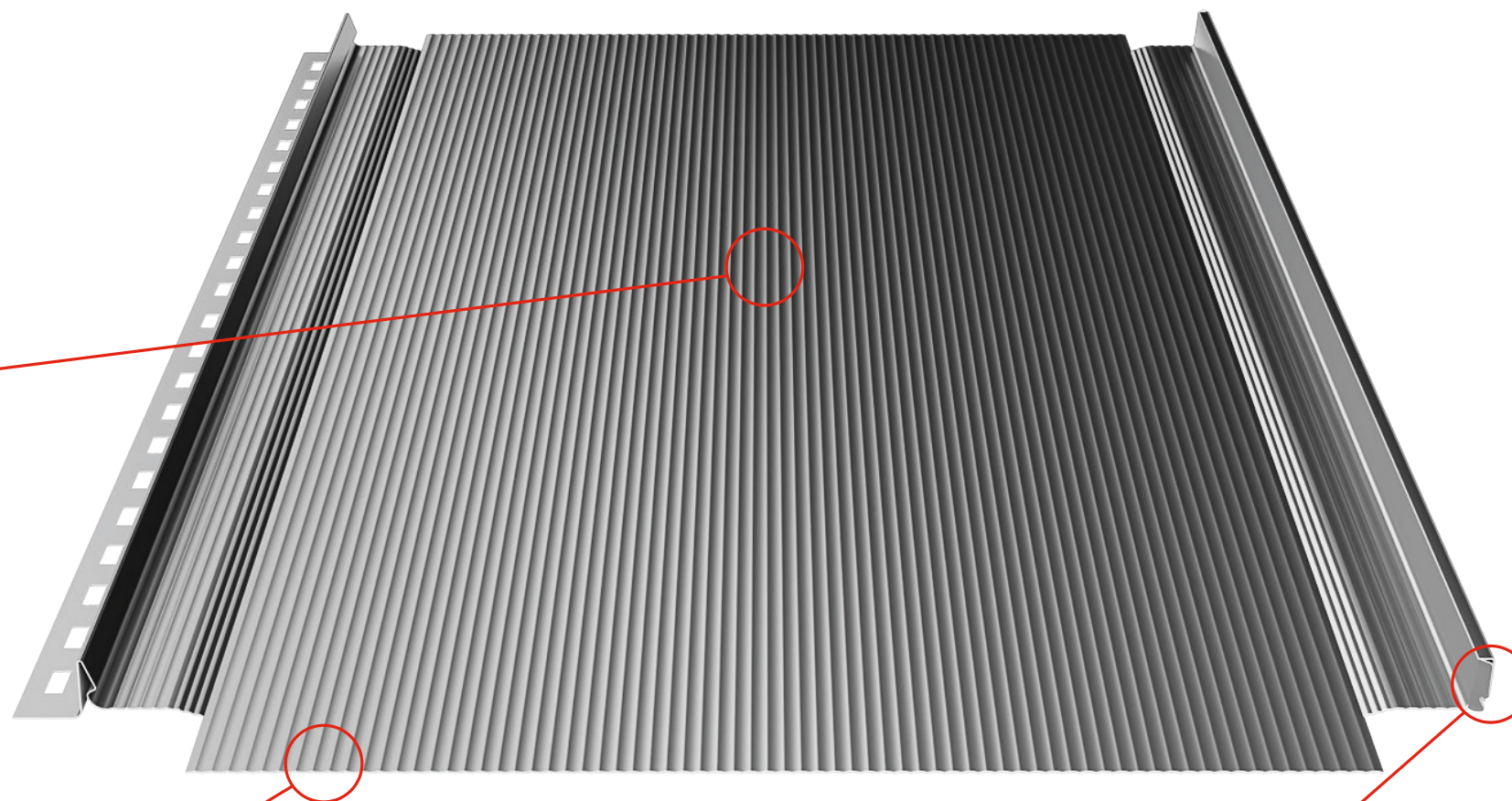
PROFILING MICRO RIB

Longitudinal micro-corrugation across the entire surface of the sheet minimises the possibility of wave effect on the flat part of the panel.



BEND LOCK

A special panel fold at the eaves part of the roof covers and secures the cut edge and eliminates the need to install screws.



COVER CAP

A solution which additionally increases the functionality of the covering is the COVER CAP element, i.e. panel seam caps on both sides. This solution also increases the visual effect and aesthetics of the covering. The COVER CAPs are bent after the installation of the roofing, hiding the visible joint between the sheets and ensuring that the roof presents a uniform, harmonious surface even from up close.

LAMBDA 2.0



Scan code
and learn
more!

LAMBDA 2.0

Innovative production line

The highly automated and technologically advanced production line has been equipped with two cooperating robot units, enabling the implementation of an innovative process for securing and packing the panels, which allow them to be transported in a vertical orientation. This solution minimises the risk of damage to the product during transport as well as when manoeuvring it on site.

Robotisation of production processes through excellent precision and repeatability does not expose the material to distortion and ensures maximum quality and accuracy of the product.

- A unique line equipped with two cooperating robot units.
- Increased production line efficiency, transport safety.
- Packing in vertical arrangement.
- Very high repeatability of product parameters.





INGURI



5.

Steel gutter system INGURI

54. Technical data

56. Description of elements

60. Advantages of INGURI gutter systems

64. Colours

65. Feedstock



Technical data

The use of a proper gutter system allows efficient drainage of water from the roof covering which is crucial for its durability and functionality. It also protects the façade of the building from damage caused by moisture.

INGURI 125/87 and 150/100 systems are complete gutter systems, manufactured from top quality steel coated on both sides. All system components have been designed to ensure correct fit and easy and quick installation.

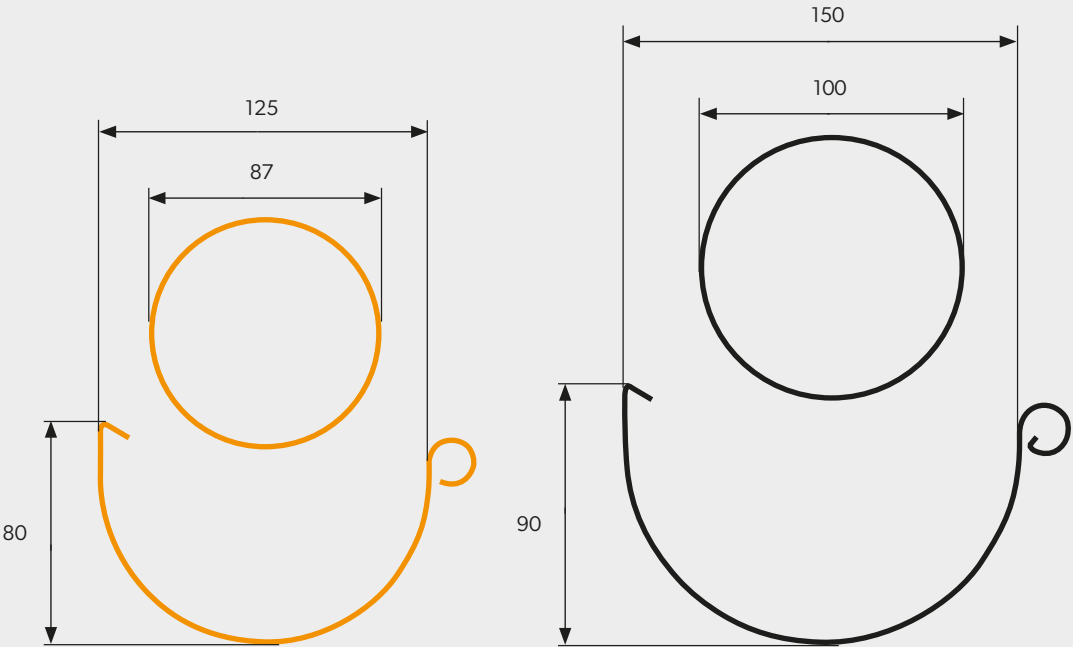
The shape and depth of the gutters ensure effective water drainage even during heavy and prolonged rainfall.



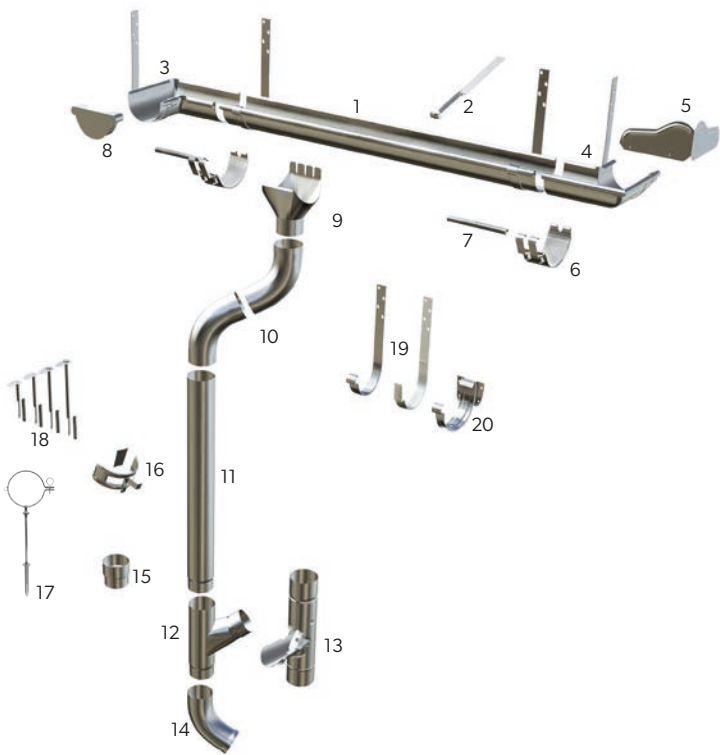
INGURI 125/87

INGURI 150/100

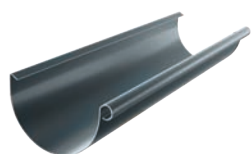
dimensions in mm



Description of elements



1	Gutter
2	Gutter support
3	Inner Corner
4	Outer corner
5	Corner cover
6	Gutter fasteners
7	Fastener stabilizer
8	Gutter end cap
9	Gutter outlet
10	Drain pipe elbow
11	Drain pipe
12	Tee pipe
13	Cleanout
14	Spout
15	Sleeve
16	Drain pipe clamp half
17	Screw clamp
18	Dowels for screw clamp
19	Top rafter hooks
20	Face hook



GUTTER

The shape of INGURI gutters is specially designed to ensure high efficiency in draining water. They have great depth and the proper profile to effectively collect water from the roof slope even during heavy rainfall without the risk of overflow. We manufacture gutters in standard lengths of 4 and 3 m.



INNER/OUTER CORNER

Aesthetic and functional connection of gutters in the corners of the building is ensured by gutter corners. Our range includes outer and inner corners with a standard 90° angle as well as 135° versions



GUTTER FASTENER

The individual sections of the gutter or the gutter with the corner are connected by means of a dedicated fastener. INGURI systems are equipped with a clip fastener (snap mechanism) to ensure a strong and durable joint with quick and easy installation. The standard fitting of the fastener with a gasket guarantees a tight connection while the execution of the element of sheet metal of the same colour as the remaining parts of the system ensures high aesthetics. The fastener is equipped with a stabiliser as standard, which additionally stiffens the joint.



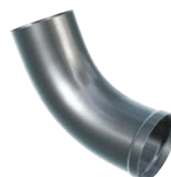
TEE PIPE

If it is necessary to discharge water from two drain pipes into one spout, a tee pipe should be used.



DRAIN PIPE

The drain pipe collects water from the gutters and directs it to the spout. The design and proper installation of this element greatly affects the functionality of the entire drainage system. The gutter drain of the INGURI systems is very well matched to the other components, ensuring a tight and solid installation. Available versions: 125/87, 125/100, 150/100.



SPOUT

The starting element of a gutter system is the spout, which carries the water away from the drain pipe. The product on offer has an angle of 63° and a section of 87 or 100 mm.



CORNER COVER

The cover prevents water from overflowing through the corner. This is particularly important if it is fitted to an inner corner that receives large amounts of water from the valley gutter. It also has an ornamental role.



DRAIN PIPE ELBOW

It allows the system components to be adapted to different roof and façade shapes. The offered product is bent at an angle of 63°.



Drain Pipe

INGURI system drain pipes have a cross-section of 87 and 100 mm. Standard pipe lengths are 3m and 1m. Fixing to the façade is carried out using dedicated clamps to ensure adequate distance from the building wall.



TOP RAFTER HOOK

The top rafter hook is mounted directly to the rafters of the roof.



FACE HOOK

The face hook is a gutter fixing element mounted to the eaves fascia board.



CLEANOUT

This element stops and enables the removal of debris falling into the drain pipe together with the water, such as leaves, feathers and small branches. This helps to maintain the system's patency and, as a result, its full functionality.



GUTTER END CAP

A component used to close the gutter at its ends. The offered cap has a large depth and is additionally equipped with a gasket.



PIPE CLAMP / SCREW CLAMP

We offer two types of clamps: those with mounting holes for any type of fastener and those adapted for a dedicated connector.



SLEEVE

Drain pipes are connected by means of a sleeve. The precise manufacture of this element means that there is no risk of leakage at the joint.



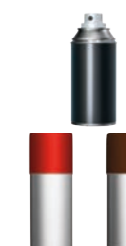
DOWELS FOR SCREWED CLAMPS

We supply dowels for clamps in three lengths: 160, 250 and 300mm.



GUTTER SUPPORT

An element for additional fixing of the gutter to the roof structure. It prevents deformation or breakage of the gutter as a result of heavy loads, e.g. due to snow sliding off the roof.



ACCESSORIES

We ensure the availability of accessories for gutter systems: gliding spray, silicones and touch-up paint.

INGURI



Scan code
and learn
more!



Advantages of INGURI gutter system



PROTECTION OF YOUR HOME

Using the right gutter system allows water to be efficiently drained from the roofing material which is crucial to its durability and functionality. It also protects the facade of the building from the effects caused by moisture. Gutter system INGURI 125/87 and 150/100 is a complete system produced from the highest quality organic coated steel or metallic coating Aluzinc. This system will effectively protect your home.



RELIABLE TIGHTNESS

The joint with the stabilizer is equipped with a gasket that ensures the tightness of the system even under extreme weather conditions. Complementary to the gutter is a bottom, equipped with gaskets, with the possibility of riveting and screwing.



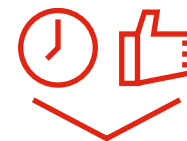
EXCELLENT WATER DRAINAGE

INGURI gutters are much deeper than competitive products, this design prevents the phenomenon of overflow of water outside the gutter, which occurs during heavy rainfall. Ergonomic gutters protect the facade against stains.



HIGH RESISTANCE TO WEATHER CONDITIONS

Used for the manufacture of INGURI gutter systems sheet metal with a thickness of 0.6 mm is coated with an organic layer. The coating has a very high resistance to atmospheric factors and mechanical damage and influence of sun rays (UV) responsible for loss of color. INGURI systems are also produced from Aluzinc 185 sheets with an additional Easyfilm polymer coating on both sides.



SIMPLE INSTALLATION

INGURI system consists of perfectly matching elements thanks to which installation is easy and quick.



PEACE OF MIND FOR YEARS

INGURI system is covered by 30-years manufacturer warranty. Such a long warranty period is ensured by high quality of the input material and many years of experience of the manufacturer. By using materials with the highest technical parameters, we give our customers a product that provides peace of mind for years.



INGURI ON THE MOVE

The long pieces are protected with a special foil sleeve so that the delivered material remains flawless. The gutters are transported in a specially equipped vehicle with balcony systems to warranty the safety of the material.



WIDE RANGE OF COLORS

The offer of a complete gutter system INGURI includes a wide range of colors that allow the gutter system to put the finishing touches to the roof. The right choice of gutter system guarantees a flawless effect of the investment and harmony.



COMPLETE OFFER

When you buy a complete roofing with gutter system INGURI, you get a longer warranty.

30 years ULTIMAT [UTK] coating.
40 years HERCULIT [HC] coating.

INGURI



Scan code
and learn
more!



Colours

INGURI [PUR/PUR]

INGURI pipes are manufactured from sheet with hot galvanized feed, which after chemical cleansing and undergoing passivation is coated with anti-corrosion coats and a decorative, organic coat. The sheet is 0,6 mm thick, with the organic layer being material of high resistance to atmospheric conditions and mechanical damage, as well as UV radiation that causes color loss

CHERRY

GRAPHITE

BRICK

BROWN CHOCOLATE

DARK BROWN

WHITE *

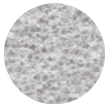
BLACK

Coatings thickness	Corrosion resistance	UV resistance	Warranty period (years)
50 µm	RC4	RUV3	30

Aluzinc INGURI [AZ 185]

It is a steel sheet coated on both sides with an aluminium-zinc alloy in a process similar to hot-dip galvanizing. Thanks to this, it meets the strictest requirements for sheet resistance to atmospheric corrosion and corrosion in humid environments. It also has a protective Easyfilm polymer coating.

Coating thickness	Corrosion resistance	UV resistance	Warranty period (years)
185 g/m2	RC3	n/a	15



ALUZINC

* The white colour is only available for the INGURI 150/100 system.

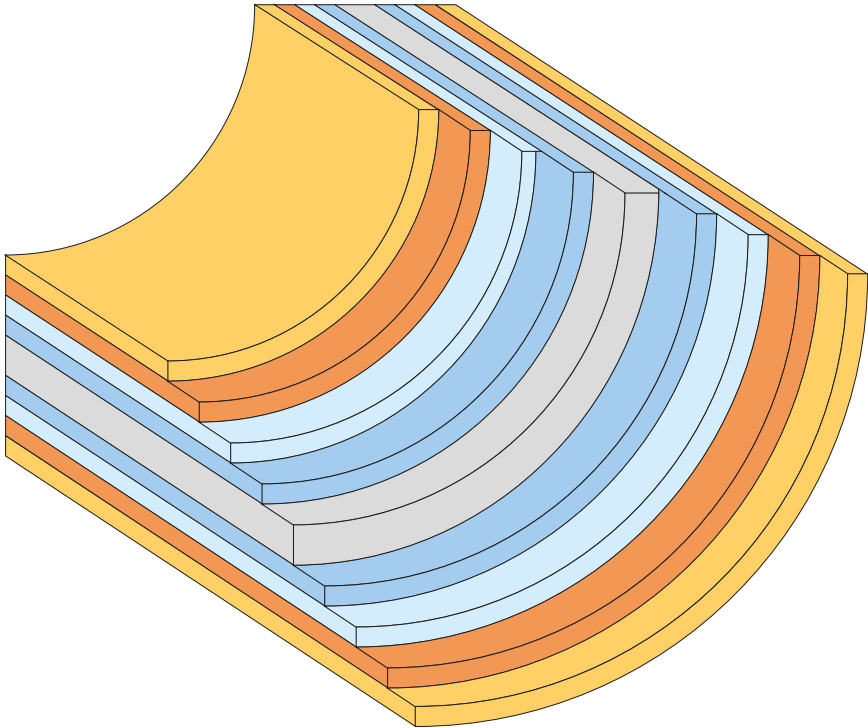
Printing technology does not allow for faithful colour rendition, so the colours shown are approximate and may differ from actual colours.

Feedstock

The suppliers of material for the manufacture of INGURI gutters are renowned steel corporations, providing the highest quality steel in the form of Aluzinc sheets – galvanised and coated – which are the input material for the manufacture of gutters.

Careful selection of the feedstock supplier has a major impact on the quality and durability of the product. This is expressed by its resistance to corrosion and discolouration. This is why INGURI gutter systems are covered by a long-term warranty.

Coated sheet cross-section



Key

Organic coating

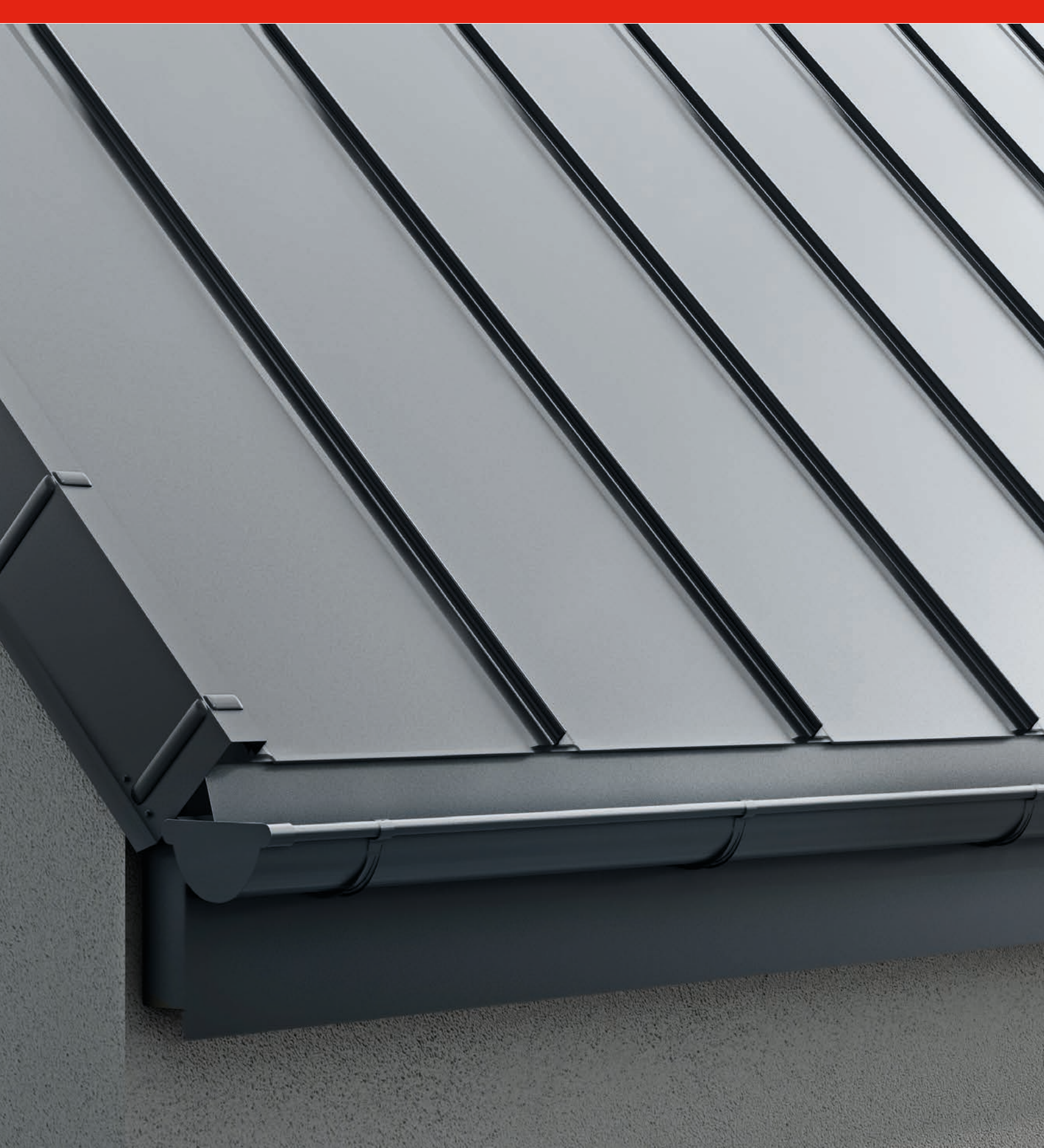
Primer coating

Corrosion protection coating

Metallic coating

Steel core

Detailed warranty conditions are specified in the warranty certificate.



6.

Flashings and accessories

68. New flashings

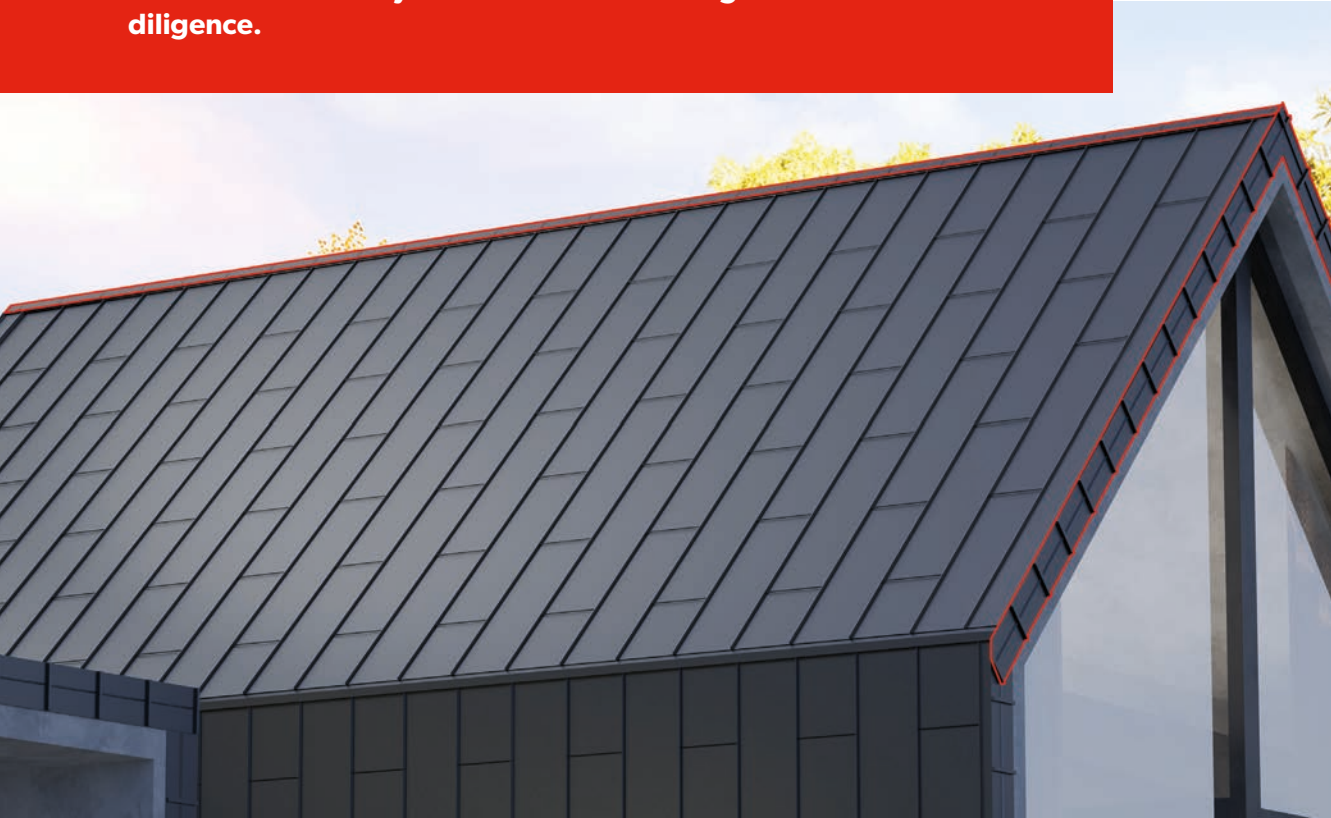
70. Flashings

72. Accesories

Flashings

Ridge tiles and flashings are an inseparable part of any properly executed roofing. They protect against seepage and overhanging while, at the same time, giving the roof an aesthetically pleasing appearance. The flashings are made of sheet metal having the same range of coatings and colours as our tile roofing, trapezoidal sheet metal, and roof panels.

BP2 Brand is continuously developing and tailoring their products to the needs of their customers. Hence, we have updated our flashings offer that saves installation time on the roof and ensures solid execution as well as highest aesthetics. Their professional installation is the key to the success of roofing details crafted with diligence.



BP2 - Flashings, details, advantages, dimensions.
Scan the code and learn more.



Barge flashing ADAPT
- NEW



Sheet thickness	0.5 mm
Width	550 mm
Height	240-320 mm



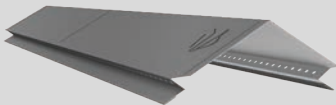
Barge flashing II
- NEW



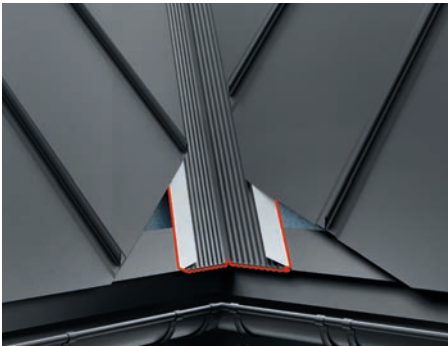
Sheet thickness	0.5 mm
Width	2000 mm
Height	150 mm



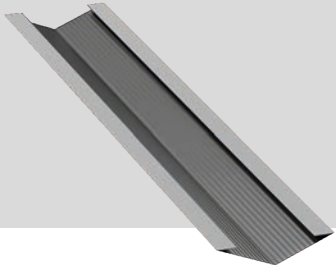
Ventilated ridge
- NEW



Sheet thickness	0.5 mm
Width	1088 mm
Height	85 mm



Valley gutter
- NEW



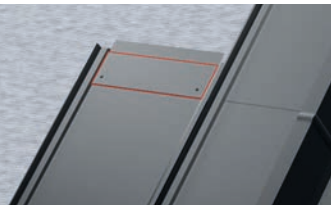
Sheet thickness	0.5 mm
Width	2000 mm
Height	95 mm



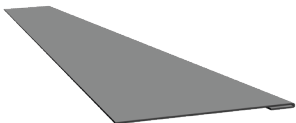
Starting drip ridge



Sheet thickness	0.5 mm
Width	2000 mm
Height	155 mm



Panel fastener



Sheet thickness	0.5 mm
Width	500 mm
Height	120 mm



Eaves trim



Sheet thickness	0.5 mm
Width	2000 mm
Height	20 mm



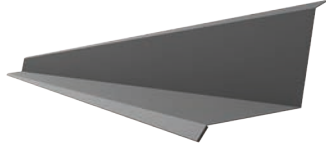
Universal gutter fascia / barge flashing extension



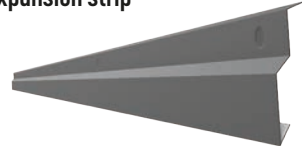
Sheet thickness	0.5 mm
Width	2000 mm
Height	190 mm



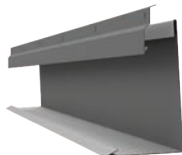
Wall flashing I



Expansion strip



Wall flashing with expansion strip



Universal ventilation flashing



Sheet thickness	0.5 mm
Width	2000 mm
Height	125 mm

Sheet thickness	0.5 mm
Width	2000 mm
Height	65 mm

Sheet thickness	0.5 mm
Width	2000 mm
Height	135 mm

Sheet thickness	0.5 mm
Width	2000 mm
Height	26 mm



Clamping systems



Farmer Screws - Self-drilling screws with EPDM washer for Clamping systems of sheet metal, tin roofing and flashings to wood substrate. Farmer type screw with TX socket.



Farmer Screws - Self-drilling screws with EPDM washer for Clamping systems of sheet metal, tin roofing and flashings to wood substrate. Farmer type screw.



Self-drilling screws - Self-drilling screw for Clamping systems thin sheets overlapping.



Clamping screws - Self-tapping screw for Clamping systems of steel elements to profiles and overlapping connection of steel elements.



Sandwich panel screws - Self-drilling screw with EPDM aluminum washer for Clamping systems of sandwich panels to steel substrate.

CLAMPING SYSTEMS	Dimensions	unit
	[mm]	
Farmer Screws	4,8 x 19	250 pcs
Farmer Screws	4,8 x 35	250 pcs
Farmer Screws	4,8 x 55	200 pcs
Farmer Screws TORX	4,8 x 35	250 pcs
Self-drilling screws max. 3,0 mm	4,8 x 19	250 pcs
Self-drilling screws max. 5,0 mm *	5,5 x 25	250 pcs
Self-drilling screws max. 12,0 mm *	5,5 x 32	250 pcs
Clamping screws L	4,2 x 32	500 pcs
* Product available on request.		



Roof comunication systems



Roof Chimney sweep bench - Chimney sweep bench.
With a large, non-slip surface. Available in lengths from 0,4 to 3,0 m. Safe width - 250 mm.systems



Chimney step - Roof step is one of the components of the communication system on the sloping roof. It consists of a solid mounting part, a non-slip surface for the footing and a handle.

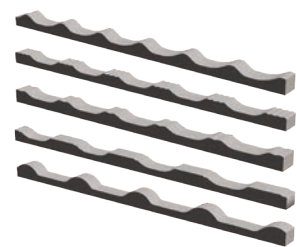


Snow fence - Snow fence system is a stable and effective solution to protect against sliding from the roof masses of snow.

ROOF COMUNICATION SYSTEMS	unit
Snow fence 2,0 m	pcs
Snow fence pipe LAMBDA 2.0 / IZI 2,0 m	set
Snow fence bracket for trapezoidal metal sheets	pcs
Snow fence bracket for metal roofing tiles	pcs
Fence bracket for IZI modular tiles	pcs
Chimney sweep bench 0.40 m	pcs
Chimney sweep bench 0.60 m	pcs
Chimney sweep bench 0,80 m	pcs
Chimney sweep bench 1,00 m	pcs
Chimney sweep bench 2,0 m	pcs
Chimney sweep bench 3,0 m	pcs
Step bracket	pcs
Bench/footing bracket for trapezoidal sheet metal	pcs
Bench/footing bracket for tin plates	pcs
Step for chimney sweep	pcs
Wall bench bracket	pcs
Step bracket	pcs



Seal systems and ventilation chimneys



Profiled gasket - Profiles shaped to mimic the corresponding roofing profile with holes are designed to protect gaps in roofs.



Ridge Tape - Vapor-permeable ridge tape is used to seal and ventilate the ridge.



Roofing silicone - Plastic-flexible, one-component rubber roofing putty for sealing flashing.



Vent stack - Vent chimneys are used as an element that terminates the gravity ventilation line in buildings - they are an alternative to masonry ventilation chimneys.

SEAL SYSTEMS AND VENTILATION CHIMNEYS	Dimensions	unit
	[mm]	
Profile gasket. ALFA, T14, T18, T18 ECO ridge	~ 1000	pcs
Profile gasket. ALFA, T14, T18, T18 ECO set	~ 1000	set
Profile gasket. STIGMA, HETA, GAMMA/ZET, BAVARIA ridge profile gasket	~ 1000	pcs
Profile gasket. STIGME, HETA, GAMMA/ZET, BAVARIA set	~ 1000	set
Profile gasket. T35, T35 ECO, T55, T60 ridge	~ 1000	pcs
Profile gasket. T35, T35 ECO, T50, T55 set	~ 1000	set
Profile gasket. T60 set	~ 1000	set
Wedge seal	1000	pcs
Wedge seal - expanding PURS	1000	pcs
ALU ridge tape	240 mm x 5 mb	mb
Roofing silicone	280 ml	pcs
Ventilation chimney for tile, ZET - uninsulated	Ø 125	pcs
Ventilation chimney for tile roof, ZET - insulated	Ø 125	pcs
Ventilation chimney for trapezoidal sheet metal - uninsulated	Ø 125	pcs
Ventilation chimney for trapezoidal sheet metal - insulated	Ø 125	pcs
Ventilation chimney for IZI modular roofing tile	Ø 110	pcs



Foils, membranes, lacquers and skylights



Membranes - Roof membranes are used as a layer of initial covering under sloped roofing. They prevent precipitation suspended there from getting into the thermal insulation and roof structure: rain and snow.



Paints and varnishes - Matching varnishes are used to protect cut edges and any damage to the covering film caused during installation.



Paints and Skylights - Profiled polycarbonate sheets for roofing and walls. They are characterized by exceptional strength properties - excellent transparency, shape retention at high temperatures and impact resistance.- Matching varnishes are used to protect cut edges and any damage to the covering film caused during installation.

FOILS, MEMBRANES, LACQUERS AND SKYLIGHTS	Dimensions	unit
BP2 Protect 100 g membrane	1,6 m x 50 mb	m2
BP2 Protect 120 g membrane	1,6 m x 50 mb	m2
BP2 Protect membrane 140 g	1,6 m x 50 mb	m2
Roof screen - 265 g	1,6 m x 25 mb	m2
Spray-on touch-up paint	150 ml	pcs
Repair paint can	200 ml	pcs
Skylight T18 ECO Total width 1.169 m Length 3 m	3,507	m2c
Skylight T18 Overall width 1,117 m Length 3 m	3,351	m2c
Skylight T35 Overall width 1,105 m Length 3 m	3,315	m2c





7.



Technical data and contact

82. Coating properties

83. Soundcontrol

84. Colours

86. Helpful links

88. Contact Us

Coating properties

Code	Coating thickness	Corrosion resistance	UV resistance	Warranty period (years)
HERCULIT [HC]	35 µm	RC4	RUV4	40 [FIT - 55*]
ICE COVER ZM [ICep]	35 µm	RC3	RUV4	35
Aluzinc [AZ 185]	185 g/m2	RC3	n/a	25
ULTIMAT 35 Standard [UTK]	35 µm	RC4	RUV4	20 [FIT - 30*]
POLIESTER Standard [RAL]	25 µm	RC3	RUV2	10
MULTILAYER 40 [MLT]	40 µm	RC3	RUV3	10

The above summary is indicative.

* Applies to FIT modular roof panels.

Sheets with ICE COVER ZM coatings - do not require paint protection of cut edges.



Detailed warranty conditions are specified in the warranty card. For MODULAR SERIES modular roof tiles and COMPACT SERIES compact roof tiles, the warranty becomes valid after registration on the website www.warranty.bp2.eu.

SOUNDCONTROL
sound-absorbing coating



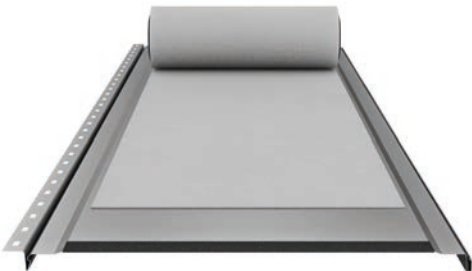
The use of SOUNDCONTROL sound-absorbing coating on steel roofing and facade coverings effectively increases their sound insulation level.

As a result, both precipitation noise and sound propagation inside the object are reduced. Coverings with SOUNDCONTROL coating are used in all kinds of facilities, which due to their size or purpose, require high acoustic standards, such as production halls, sports facilities, commercial and residential buildings.

Due to the very high degree of moisture absorption by the SOUNDCONTROL coating, it also acts as an anti-condensation membrane. Soundcontrol is applied to a strip of flat sheet before profiling. This ensures perfect adhesion over the entire roofing surface.



Now the SOUNDCONTROL coating sectional application is also available for the LAMBDA 2.0 product

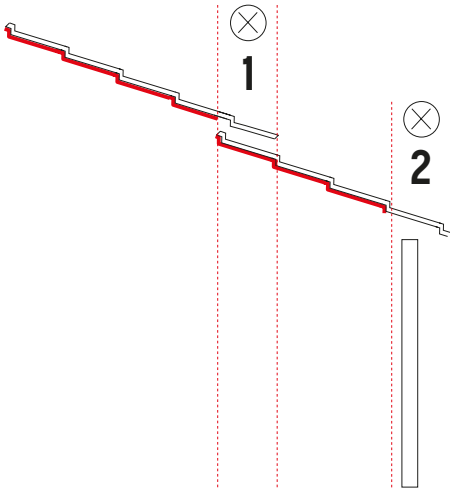


Installation instructions

During installation, the soundproofing coating SOUNDCONTROL should absolutely be removed in places that do not provide an outlet for moist air.

This applies primarily to:


- 1. sections of the covering directly above the wall and outside the building perimeter,
- 2. the place where the sheets overlap
 - When the covering consists of several sheets joined from the length.





ATTENTION! The bonding is permanent. DRIPSTOP cannot be removed and re-applied. When using DRIPSTOP on the roofing of farm buildings, it is recommended to wash it with a fungicide at least once a year. When installing the covering, the phenomenon of capillary rise should be eliminated. The DRIPSTOP coating must therefore be removed manually in the eaves and ridge area (at least 10 cm spacing). Anti-condensation coated sheets should adhere tightly to the supports and frames of the structure. Therefore, regardless of the profile, they should be fixed to the supports in each lower wave.


Colours

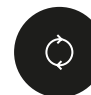
HERCULIT [HC]



HC 3009


HC 7016



HC 8004



HC 8017



HC 9005


 FIT panels made of sheet metal in HERCULIT [HC] coating have a guarantee of color repeatability.


ULTIMAT [UTK]



UTK 11



UTK 23



UTK 24



UTK 27



UTK 28


UTK 31


UTK 32


UTK 33


UTK 750

 Sheet colors in ULTIMAT [UTK] coating with guarantee of repeatability for FIT panel.

ICE COVER ZM [ICep]


ICep 23


ICep 28


ICep 32


ICep 33


ICep 750

MAT 35 Standard [TK]



TK 23



TK 24


TK 31



TK 32



TK 33


 In addition, custom colours and coatings are available upon individual request, outside of the palette shown.


 Printing technology does not allow for faithful colour rendition, so the colours shown are approximate and may differ from actual colours.


POLIESTER Standard [RAL]



RAL 1002



RAL 1015



RAL 3000



RAL 3005



RAL 3009



RAL 3011

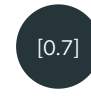

RAL 5010



RAL 6005



RAL 6011



RAL 6020



RAL 6029



RAL 7016



RAL 7024



RAL 7035



RAL 8004



RAL 8017



RAL 8019


RAL 9002


RAL 9005


RAL 9006


RAL 9007


RAL 9010

SP35 Multilayer [SP35/MULTI]


SL252
Winchester



SL55
Venge



SL59
Dark Oak


SL65
Golden Oak

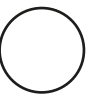
*Also available in double-sided coated version: Winchester - SH252/SH252, Dark Oak - SH59/SH59, Golden Oak - SH65/SH65.


Metallic coating


OCYNK
[ZN]


ALUZINC
[AZ]

Board sheets


MARKER
BOARD
[M]


CHALK
BOARD
[C]

	Standard sheet thickness is 0.5 mm
[0.6]	Material also available in 0.6 mm thickness
[0.7]	Material also available in thickness of 0.7 mm
[0.8]	Material also available in 0.8 mm thickness
[1.0]	Material also available in 1.0 mm thickness

BP2 - Helpful links



BP2 website





BP2 Academy of Masters





Login to Eprofil system





Documents - installation manuals





Warranty registration







Videos - installation manuals





Videos - roof realizations





facebook.com/bp2eu





instagram.com/bp2_eu





linkedin.com/company/bp2eu





youtube.com/@BP2eu



Contact Us

BP2 sp. z o.o.

ul. Nadwiślańska 11/139
30-527 Kraków

TAX ID: 6762431701

www.bp2.eu



- Distributors
- Sales representatives
- Authorized contractors
- Technical consultancy

distributor details/stamp



All numerical values and physicochemical characteristics of the products given in the catalogue are indicative and illustrative. The company does not assume any responsibility for any errors or mistakes in editing and printing as well as reserves the right to make changes to product specifications.



This catalog does not constitute an offer within the meaning of the Civil Code.
Copyright © 2023 BP2. All rights reserved.





Modular roofing tiles
MODULAR SERIES



Compact roofing tiles
COMPACT SERIES



Steel roofing tiles
CLASSIC SERIES



Retro roof tiles
RETRO SERIES



Roof panels
PANEL SERIES



INTEGRATED
PV PANELS



Steel roof gutter system
INGURI



TRAPEZOIDAL
SHEETS



FLAT METAL
SHEETS



FLASHINGS



ACCESORIES



Roof Sandwich
PANELS



Wall Sandwich
PANELS



Facade cladding
SKRIN, LINEA, SINUS



Wall cassette &
PROSYSTHERM



Uncoiling and slitting
SERVICES



Cut to lenght
SERVICES



PERFORATION
of sheets

